

**Product Name: PLC  $\gamma$ 1 Rabbit Monoclonal Antibody****Catalog #: AMRe21121**

For research use only.

**Summary**

<b>Description</b>	Recombinant rabbit monoclonal antibody
<b>Host</b>	Rabbit
<b>Application</b>	WB,IHC,ICC/IF,ELISA,IP
<b>Reactivity</b>	Human,Mouse,Rat
<b>Conjugation</b>	Unconjugated
<b>Modification</b>	Unmodified
<b>Isotype</b>	IgG,Kappa
<b>Clonality</b>	Monoclonal
<b>Form</b>	Liquid
<b>Concentration</b>	0.3mg/ml. The concentration of this product may be batch-dependent.
<b>Storage</b>	Aliquot and store at -20°C (valid for 12 months). Avoid freeze/thaw cycles.
<b>Shipping</b>	Ice bags
<b>Buffer</b>	PBS, 50% glycerol, 0.05% Proclin 300, 0.05%protective protein
<b>Purification</b>	Protein A

**Application**

<b>Dilution Ratio</b>	WB 1:2000-1:10000,IHC 1:200-1:1000,ICC/IF 1:200-1:1000,ELISA 1:5000-1:20000,IP 1:50-1:200
<b>Molecular Weight</b>	Calculated MW:149kD;Observed MW:149kD

**Antigen Information**

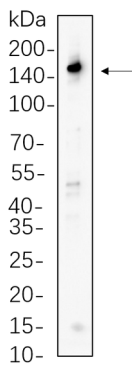
<b>Gene Name</b>	PLCG1
<b>Alternative Names</b>	PLCG1;PLC1;1-phosphatidylinositol 4;5-bisphosphate phosphodiesterase gamma-1;PLC-148;Phosphoinositide phospholipase C-gamma-1;Phospholipase C-II;PLC-II;Phospholipase C-gamma-1;PLC-gamma-1
<b>Gene ID</b>	5335.0
<b>SwissProt ID</b>	P19174
<b>Immunogen</b>	A synthetic peptide corresponding to target protein

**Background**

Cell localization: Cytoplasm. The protein encoded by this gene catalyzes the formation of inositol 1,4,5-trisphosphate and diacylglycerol from phosphatidylinositol 4,5-bisphosphate. This reaction uses calcium as a cofactor and plays an important role in the intracellular transduction of receptor-mediated tyrosine kinase activators. For example, when activated by SRC, the encoded protein causes the Ras guanine nucleotide exchange factor RasGRP1 to translocate to the Golgi, where it activates Ras. Also, this protein has been shown to be a major substrate for heparin-binding growth factor 1 (acidic fibroblast growth factor)-activated tyrosine kinase. Two transcript variants encoding different isoforms have been found for this gene. [provided by RefSeq, Jul 2008],

## Research Area

### Image Data



Rat brain cell lysates were separated by 4-20% SDS-PAGE, and the membrane was blotted with PLC  $\gamma$ 1 Rabbit Monoclonal Antibody 1:1000. The HRP-conjugated Goat anti-Rabbit IgG(H + L) antibody was used to detect the antibody.