

**Product Name: ULK1 (Phospho Ser757) Rabbit Monoclonal Antibody****Catalog #: AMRe21107**

For research use only.

**Summary**

<b>Description</b>	Recombinant rabbit monoclonal antibody
<b>Host</b>	Rabbit
<b>Application</b>	WB,ICC/IF,ELISA,IP
<b>Reactivity</b>	Human,Mouse,Rat
<b>Conjugation</b>	Phospho
<b>Modification</b>	Phosphorylated
<b>Isotype</b>	IgG,Kappa
<b>Clonality</b>	Monoclonal
<b>Form</b>	Liquid
<b>Concentration</b>	0.2mg/ml. The concentration of this product may be batch-dependent.
<b>Storage</b>	Aliquot and store at -20°C (valid for 12 months). Avoid freeze/thaw cycles.
<b>Shipping</b>	Ice bags
<b>Buffer</b>	PBS, 50% glycerol, 0.05% Proclin 300, 0.05%protective protein
<b>Purification</b>	Protein A

**Application**

<b>Dilution Ratio</b>	WB 1:2000-1:10000,ICC/IF 1:200-1:1000,ELISA 1:5000-1:20000,IP 1:50-1:200
<b>Molecular Weight</b>	Calculated MW:113kD;Observed MW:150kD

**Antigen Information**

<b>Gene Name</b>	ULK1
<b>Alternative Names</b>	ULK1;KIAA0722;Serine/threonine-protein kinase ULK1;Autophagy-related protein 1 homolog;ATG1;hATG1;Unc-51-like kinase 1
<b>Gene ID</b>	8408.0
<b>SwissProt ID</b>	O75385
<b>Immunogen</b>	A synthetic Phosphorylated peptide corresponding to residues target protein

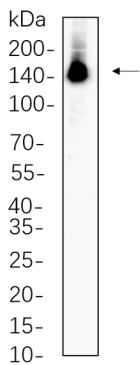
**Background**

Cell localization:Cytoplasm, cytosol . Preautophagosomal structure . Under starvation conditions, is localized to punctate structures primarily representing the isolation membrane that sequesters a portion of the cytoplasm resulting in the formation

of an autophagosome. ..catalytic activity:ATP + a protein = ADP + a phosphoprotein.,function:Involved in axon growth. Plays an essential role in neurite extension of cerebellar granule cells.,similarity:Belongs to the protein kinase superfamily. Ser/Thr protein kinase family. APG1/unc-51/ULK1 subfamily.,similarity:Contains 1 protein kinase domain.,subunit:Interacts with GABARAP and GABARAPL2.,tissue specificity:Ubiquitously expressed. Detected in the following adult tissues: skeletal muscle, heart, pancreas, brain, placenta, liver, kidney, and lung.,

## Research Area

## Image Data



NIH-3T3 cell lysates were separated by 4-20% SDS-PAGE, and the membrane was blotted with ULK1 (Phospho Ser757) Rabbit Monoclonal Antibody 1:1000. The HRP-conjugated Goat anti-Rabbit IgG(H + L) antibody was used to detect the antibody.