

**Product Name: GSK3  $\alpha/\beta$  (Phospho Tyr216/Tyr279) Rabbit Monoclonal Antibody**  
**Catalog #: AMRe21104**

For research use only.

## Summary

<b>Description</b>	Recombinant rabbit monoclonal antibody
<b>Host</b>	Rabbit
<b>Application</b>	WB,IHC,ICC/IF,ELISA,IP
<b>Reactivity</b>	Human,Mouse,Rat
<b>Conjugation</b>	Phospho
<b>Modification</b>	Phosphorylated
<b>Isotype</b>	IgG,Kappa
<b>Clonality</b>	Monoclonal
<b>Form</b>	Liquid
<b>Concentration</b>	0.2mg/ml. The concentration of this product may be batch-dependent.
<b>Storage</b>	Aliquot and store at -20°C (valid for 12 months). Avoid freeze/thaw cycles.
<b>Shipping</b>	Ice bags
<b>Buffer</b>	PBS, 50% glycerol, 0.05% Proclin 300, 0.05%protective protein
<b>Purification</b>	Protein A

## Application

<b>Dilution Ratio</b>	WB 1:2000-1:10000,IHC 1:200-1:1000,ICC/IF 1:200-1:1000,ELISA 1:5000-1:20000,IP 1:50-1:200
<b>Molecular Weight</b>	Calculated MW:47kD,51kD;Observed MW:47kD,51kD

## Antigen Information

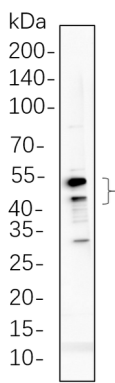
<b>Gene Name</b>	GSK3A/GSK3B GSK3A;Glycogen synthase kinase-3 alpha;GSK-3 alpha;Serine/threonine-protein kinase
<b>Alternative Names</b>	GSK3A;GSK3B;Glycogen synthase kinase-3 beta;GSK-3 beta;Serine/threonine-protein kinase GSK3B
<b>Gene ID</b>	2931
<b>SwissProt ID</b>	P49840;P49841
<b>Immunogen</b>	A synthetic Phosphorylated peptide corresponding to residues target protein

## Background

Cell localization: Cytoplasm. glycogen synthase kinase 3 alpha (GSK3A) Homo sapiens This gene encodes a multifunctional Ser/Thr protein kinase that is implicated in the control of several regulatory proteins including glycogen synthase, and transcription factors, such as JUN. It also plays a role in the WNT and PI3K signaling pathways, as well as regulates the production of beta-amyloid peptides associated with Alzheimer's disease. [provided by RefSeq, Oct 2011],

## Research Area

## Image Data



C6 cell lysates were separated by 4-20% SDS-PAGE, and the membrane was blotted with GSK3  $\alpha/\beta$  (Phospho Tyr216/Tyr279) Rabbit Monoclonal Antibody 1:1000. The HRP-conjugated Goat anti-Rabbit IgG(H + L) antibody was used to detect the antibody.