
Product Name: Cleaved N-terminal GSDMD Rabbit Monoclonal Antibody**Catalog #: AMRe21098**

For research use only.

Summary

Description	Recombinant rabbit monoclonal antibody
Host	Rabbit
Application	WB,ICC/IF,ELISA,IP
Reactivity	Human,Mouse,Rat
Conjugation	Unconjugated
Modification	Unmodified
Isotype	IgG,Kappa
Clonality	Monoclonal
Form	Liquid
Concentration	0.3mg/ml. The concentration of this product may be batch-dependent.
Storage	Aliquot and store at -20°C (valid for 12 months). Avoid freeze/thaw cycles.
Shipping	Ice bags
Buffer	PBS, 50% glycerol, 0.05% Proclin 300, 0.05%protective protein
Purification	Protein A

Application

Dilution Ratio	WB 1:2000-1:10000,ICC/IF 1:200-1:1000,ELISA 1:5000-1:20000,IP 1:50-1:200
Molecular Weight	Calculated MW:53kD;Observed MW:35kD

Antigen Information

Gene Name	GSDMD
Alternative Names	
Gene ID	0.0
SwissProt ID	P57764
Immunogen	A synthetic peptide of human Cleaved C-terminal GSDMD

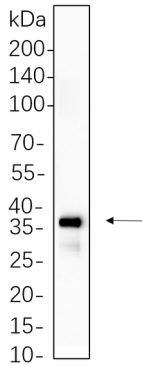
Background

Cell localization:[Gasdermin-D]: Cytoplasm, cytosol . Inflammasome . In response to a canonical inflammasome stimulus, such as nigericin, recruited to NLRP3 inflammasome with similar kinetics to that of uncleaved CASP1 precursor. .; [Gasdermin-D, N-terminal]: Cell membrane ; Multi-pass membrane protein . Secreted . Released in the extracellular milieu following pyroptosis. .;

[Gasdermin-D, C-terminal]: Cytoplasm, cytosol ..

Research Area

Image Data



THP-1 cell lysates were separated by 4-20% SDS-PAGE, and the membrane was blotted with Cleaved N-terminal GSDMD Rabbit Monoclonal Antibody 1:1000. The HRP-conjugated Goat anti-Rabbit IgG(H + L) antibody was used to detect the antibody.