

**Product Name: PKR Rabbit Monoclonal Antibody****Catalog #: AMRe21097**

For research use only.

**Summary**

<b>Description</b>	Recombinant rabbit monoclonal antibody
<b>Host</b>	Rabbit
<b>Application</b>	WB,IHC,ICC/IF,ELISA,IP
<b>Reactivity</b>	Human,Mouse,Rat
<b>Conjugation</b>	Unconjugated
<b>Modification</b>	Unmodified
<b>Isotype</b>	IgG,Kappa
<b>Clonality</b>	Monoclonal
<b>Form</b>	Liquid
<b>Concentration</b>	0.3mg/ml. The concentration of this product may be batch-dependent.
<b>Storage</b>	Aliquot and store at -20°C (valid for 12 months). Avoid freeze/thaw cycles.
<b>Shipping</b>	Ice bags
<b>Buffer</b>	PBS, 50% glycerol, 0.05% Proclin 300, 0.05%protective protein
<b>Purification</b>	Protein A

**Application**

<b>Dilution Ratio</b>	WB 1:2000-1:10000,IHC 1:100-1:500,ICC/IF 1:200-1:1000,ELISA 1:5000-1:20000,IP 1:50-1:200
<b>Molecular Weight</b>	Calculated MW:62kD;Observed MW:62kD

**Antigen Information**

<b>Gene Name</b>	EIF2AK2 EIF2AK2;PKR;PRKR;Interferon-induced;double-stranded RNA-activated protein
<b>Alternative Names</b>	kinase;Eukaryotic translation initiation factor 2-alpha kinase 2;eIF-2A protein kinase 2;Interferon-inducible RNA-dependent protein kinase;P1/eIF-2A protein k
<b>Gene ID</b>	5610.0
<b>SwissProt ID</b>	P19525
<b>Immunogen</b>	A synthetic peptide corresponding to target protein

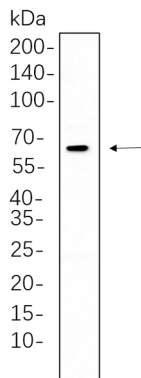
**Background**

Cell localization:Cytoplasm . Nucleus . Cytoplasm, perinuclear region . Nuclear localization is elevated in acute leukemia,

myelodysplastic syndrome (MDS), melanoma, breast, colon, prostate and lung cancer patient samples or cell lines as well as neurocytes from advanced Creutzfeldt-Jakob disease patients. ..The protein encoded by this gene is a serine/threonine protein kinase that is activated by autophosphorylation after binding to dsRNA. The activated form of the encoded protein can phosphorylate translation initiation factor EIF2S1, which in turn inhibits protein synthesis. This protein is also activated by manganese ions and heparin. Three transcript variants encoding two different isoforms have been found for this gene. [provided by RefSeq, Oct 2011],

## Research Area

## Image Data



K562 whole cell lysates were separated by 10% SDS-PAGE, and the membrane was blotted with PKR Rabbit Monoclonal Antibody(1:1000). The HRP-conjugated Goat anti-Rabbit IgG(H + L) antibody was used to detect the antibody.