

Product Name: TTF1 Rabbit Monoclonal Antibody**Catalog #: AMRe21095**

For research use only.

Summary

Description	Recombinant rabbit monoclonal antibody
Host	Rabbit
Application	WB,IHC,ICC/IF,ELISA,IP
Reactivity	Human,Mouse,Rat
Conjugation	Unconjugated
Modification	Unmodified
Isotype	IgG,Kappa
Clonality	Monoclonal
Form	Liquid
Concentration	0.3mg/ml. The concentration of this product may be batch-dependent.
Storage	Aliquot and store at -20°C (valid for 12 months). Avoid freeze/thaw cycles.
Shipping	Ice bags
Buffer	PBS, 50% glycerol, 0.05% Proclin 300, 0.05%protective protein
Purification	Protein A

Application

Dilution Ratio	WB 1:2000-1:10000,IHC 1:200-1:1000,ICC/IF 1:200-1:1000,ELISA 1:5000-1:20000,IP 1:50-1:200
Molecular Weight	Calculated MW:40kD;Observed MW:40kD

Antigen Information

Gene Name	NKX2-1 AV026640;BCH;Benign chorea;BHC;Homeobox protein NK 2 homolog A;Homeobox protein NK-2 homolog A;Homeobox protein Nkx 2.1;Homeobox protein Nkx-2.1;Homeobox protein Nkx2.1;NK 2;NK 2 homolog A;NK2;NK2 homeobox 1;NK2, drosophila, homolog of, A;NK2.1,
Alternative Names	Mouse, homolog of;Nkx 2 1;NKX 2.1;NKX 2A;NKX2 1;Nkx2-1;NKX2.1;NKX21_HUMAN;NKX2A;T EBP;T/EBP;TEBP;Thyroid nuclear factor 1;Thyroid nuclear factor;Thyroid specific enhancer binding protein;Thyroid transcription factor 1;Tin man;Tinman;TITF 1;TITF1;TTF 1;TTF-1;TTF1
Gene ID	7080.0

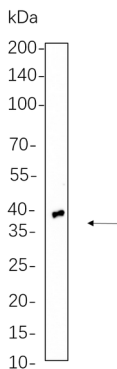
SwissProt ID	P43699
Immunogen	Recombinant protein of human TTF1

Background

Cell localization:Nuclear.This gene encodes a protein initially identified as a thyroid-specific transcription factor. The encoded protein binds to the thyroglobulin promoter and regulates the expression of thyroid-specific genes but has also been shown to regulate the expression of genes involved in morphogenesis. Mutations and deletions in this gene are associated with benign hereditary chorea, choreoathetosis, congenital hypothyroidism, and neonatal respiratory distress, and may be associated with thyroid cancer. Multiple transcript variants encoding different isoforms have been found for this gene. This gene shares the symbol/alias 'TTF1' with another gene, transcription termination factor 1, which plays a role in ribosomal gene transcription. [provided by RefSeq, Feb 2014],

Research Area

Image Data



Rat lung cell lysates were separated by 4-20% SDS-PAGE, and the membrane was blotted with TTF1 Rabbit Monoclonal Antibody 1:1000. The HRP-conjugated Goat anti-Rabbit IgG(H + L) antibody was used to detect the antibody.