

Product Name: Yes1 Rabbit Monoclonal Antibody**Catalog #: AMRe21073**

For research use only.

Summary

Description	Recombinant rabbit monoclonal antibody
Host	Rabbit
Application	WB,IHC,ICC/IF,ELISA,IP
Reactivity	Human
Conjugation	Unconjugated
Modification	Unmodified
Isotype	IgG,Kappa
Clonality	Monoclonal
Form	Liquid
Concentration	0.3mg/ml. The concentration of this product may be batch-dependent.
Storage	Aliquot and store at -20°C (valid for 12 months). Avoid freeze/thaw cycles.
Shipping	Ice bags
Buffer	PBS, 50% glycerol, 0.05% Proclin 300, 0.05%protective protein
Purification	Protein A

Application

Dilution Ratio	WB 1:2000-1:10000,IHC 1:200-1:1000,ICC/IF 1:200-1:1000,ELISA 1:5000-1:20000,IP 1:50-1:200
Molecular Weight	Calculated MW:61kD;Observed MW:61kD

Antigen Information

Gene Name	YES1
Alternative Names	YES1;YES;Tyrosine-protein kinase Yes;Proto-oncogene c-Yes;p61-Yes
Gene ID	7525.0
SwissProt ID	P07947
Immunogen	A synthetic peptide of human Yes1

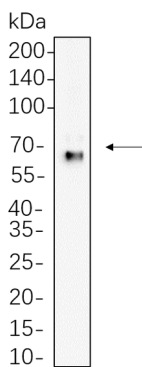
Background

Cell localization:Cell membrane. Cytoplasm, cytoskeleton, microtubule organizing center, centrosome. Cytoplasm, cytosol. Newly synthesized protein initially accumulates in the Golgi region and traffics to the plasma membrane through the exocytic

pathway..This gene is the cellular homolog of the Yamaguchi sarcoma virus oncogene. The encoded protein has tyrosine kinase activity and belongs to the src family of proteins. This gene lies in close proximity to thymidylate synthase gene on chromosome 18, and a corresponding pseudogene has been found on chromosome 22. [provided by RefSeq, Jul 2008],

Research Area

Image Data



K562 whole cell lysates were separated by 10% SDS-PAGE, and the membrane was blotted with Yes1 Rabbit Monoclonal Antibody(1:1000). The HRP-conjugated Goat anti-Rabbit IgG(H + L) antibody was used to detect the antibody.