
Product Name: Cytokeratin 20 Rabbit Monoclonal Antibody**Catalog #: AMRe21063**

For research use only.

Summary

Description	Recombinant rabbit monoclonal antibody
Host	Rabbit
Application	WB,IHC,IF,IP,ELISA
Reactivity	Human,Rat
Conjugation	Unconjugated
Modification	Unmodified
Isotype	IgG,Kappa
Clonality	Monoclonal
Form	Liquid
Concentration	0.3mg/ml. The concentration of this product may be batch-dependent.
Storage	Aliquot and store at -20°C (valid for 12 months). Avoid freeze/thaw cycles.
Shipping	Ice bags
Buffer	PBS, 50% glycerol, 0.05% Proclin 300, 0.05%protective protein
Purification	Protein A

Application

Dilution Ratio	IHC 1:200-1:1000;WB 1:2000-1:10000;IF 1:200-1:1000;ELISA 1:5000-1:20000;IP 1:50-1:200;
Molecular Weight	Calculated MW:49kD;Observed MW:49kD

Antigen Information

Gene Name	KRT20
Alternative Names	Keratin, type I cytoskeletal 20;Cytokeratin-20;CK-20;Keratin-20;K20;Protein IT;
Gene ID	54474.0
SwissProt ID	P35900
Immunogen	A synthetic peptide of human Cytokeratin 20

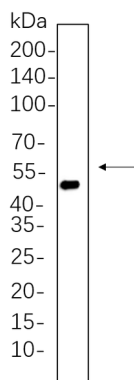
Background

Cell localization:Cytoplasmic, Membranous.The protein encoded by this gene is a member of the keratin family. The keratins are intermediate filament proteins responsible for the structural integrity of epithelial cells and are subdivided into cytokeratins and hair keratins. The type I cytokeratins consist of acidic proteins which are arranged in pairs of heterotypic keratin chains. This

cytokeratin is a major cellular protein of mature enterocytes and goblet cells and is specifically expressed in the gastric and intestinal mucosa. The type I cytokeratin genes are clustered in a region of chromosome 17q12-q21. [provided by RefSeq, Jul 2008],

Research Area

Image Data



HT-29 whole cell lysates were separated by 10% SDS-PAGE, and the membrane was blotted with Cytokeratin 20 Rabbit Monoclonal Antibody(1:1000). The HRP-conjugated Goat anti-Rabbit IgG(H + L) antibody was used to detect the antibody.