

Product Name: TRAF6 Rabbit Monoclonal Antibody**Catalog #: AMRe21044**

For research use only.

Summary

Description	Recombinant rabbit monoclonal antibody
Host	Rabbit
Application	WB,IHC,ICC/IF,ELISA,IP
Reactivity	Human,Mouse,Rat
Conjugation	Unconjugated
Modification	Unmodified
Isotype	IgG,Kappa
Clonality	Monoclonal
Form	Liquid
Concentration	0.2mg/ml. The concentration of this product may be batch-dependent.
Storage	Aliquot and store at -20°C (valid for 12 months). Avoid freeze/thaw cycles.
Shipping	Ice bags
Buffer	PBS, 50% glycerol, 0.05% Proclin 300, 0.05%protective protein
Purification	Protein A

Application

Dilution Ratio	WB 1:2000-1:10000,IHC 1:100-1:500,ICC/IF 1:200-1:1000,ELISA 1:5000-1:20000,IP 1:50-1:200
Molecular Weight	Calculated MW:60kD;Observed MW:60kD

Antigen Information

Gene Name	TRAF6
Alternative Names	TRAF6;RNF85;TNF receptor-associated factor 6;E3 ubiquitin-protein ligase TRAF6;Interleukin-1 signal transducer;RING finger protein 85
Gene ID	7189.0
SwissProt ID	Q9Y4K3
Immunogen	A synthetic peptide of human TRAF6

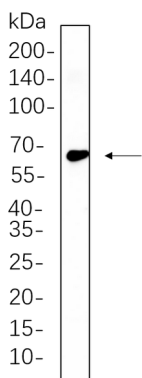
Background

Cell localization:Cytoplasm . Cytoplasm, cell cortex . Nucleus . Lipid droplet . Found in the nuclei of some aggressive B-cell lymphoma cell lines as well as in the nuclei of both resting and activated T- and B-lymphocytes. Found in punctate nuclear body

protein complexes. Ubiquitination may occur in the cytoplasm and sumoylation in the nucleus. RSAD2/viperin recruits it to the lipid droplet (By similarity). ..TNF receptor associated factor 6 (TRAF6) Homo sapiens The protein encoded by this gene is a member of the TNF receptor associated factor (TRAF) protein family. TRAF proteins are associated with, and mediate signal transduction from, members of the TNF receptor superfamily. This protein mediates signaling from members of the TNF receptor superfamily as well as the Toll/IL-1 family. Signals from receptors such as CD40, TNFSF11/RANCE and IL-1 have been shown to be mediated by this protein. This protein also interacts with various protein kinases including IRAK1/IRAK, SRC and PKCzeta, which provides a link between distinct signaling pathways. This protein functions as a signal transducer in the NF-kappaB pathway that activates I kappa B kinase (IKK) in response to proinflammatory cytokines. The interaction of this protein with UBE2N/UBC13, and UBE2V1/UEV1A, which are ubiquitin conjugating enzymes catalyzing the formation of polyubiquitin chains, has

Research Area

Image Data



Rat brain whole cell lysates were separated by 10% SDS-PAGE, and the membrane was blotted with TRAF6 Rabbit Monoclonal Antibody(1:1000). The HRP-conjugated Goat anti-Rabbit IgG(H + L) antibody was used to detect the antibody.