

Product Name: SATB2 Rabbit Monoclonal Antibody**Catalog #: AMRe21025**

For research use only.

Summary

Description	Recombinant rabbit monoclonal antibody
Host	Rabbit
Application	WB,IHC,ICC/IF,ELISA,IP
Reactivity	Human,Mouse,Rat
Conjugation	Unconjugated
Modification	Unmodified
Isotype	IgG,Kappa
Clonality	Monoclonal
Form	Liquid
Concentration	0.2mg/ml. The concentration of this product may be batch-dependent.
Storage	Aliquot and store at -20°C (valid for 12 months). Avoid freeze/thaw cycles.
Shipping	Ice bags
Buffer	PBS, 50% glycerol, 0.05% Proclin 300, 0.05%protective protein
Purification	Protein A

Application

Dilution Ratio	WB 1:2000-1:10000,IHC 1:100-1:1000,ICC/IF 1:200-1:1000,ELISA 1:5000-1:20000,IP 1:50-1:200
Molecular Weight	Calculated MW:83kD;Observed MW:100kD

Antigen Information

Gene Name	SATB2
Alternative Names	KIAA1034
Gene ID	23314.0
SwissProt ID	Q9UPW6
Immunogen	A synthetic peptide of human SATB2

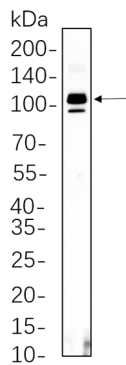
Background

Cell localization:Nucleus matrix ..This gene encodes a DNA binding protein that specifically binds nuclear matrix attachment regions. The encoded protein is involved in transcription regulation and chromatin remodeling. Defects in this gene are

associated with isolated cleft palate and mental retardation. Alternate splicing results in multiple transcript variants that encode the same protein. [provided by RefSeq, Feb 2010],

Research Area

Image Data



THP-1 whole cell lysates were separated by 10% SDS-PAGE, and the membrane was blotted with SATB2 Rabbit Monoclonal Antibody(1:1000). The HRP-conjugated Goat anti-Rabbit IgG(H + L) antibody was used to detect the antibody.