

---

**Product Name: Actinin- $\alpha$ 2 Rabbit Monoclonal Antibody****Catalog #: AMRe21009**

For research use only.

**Summary**

<b>Description</b>	Recombinant rabbit monoclonal antibody
<b>Host</b>	Rabbit
<b>Application</b>	WB,IHC,ICC/IF,ELISA,IP
<b>Reactivity</b>	Human,Mouse,Rat
<b>Conjugation</b>	Unconjugated
<b>Modification</b>	Unmodified
<b>Isotype</b>	IgG,Kappa
<b>Clonality</b>	Monoclonal
<b>Form</b>	Liquid
<b>Concentration</b>	0.2mg/ml. The concentration of this product may be batch-dependent.
<b>Storage</b>	Aliquot and store at -20°C (valid for 12 months). Avoid freeze/thaw cycles.
<b>Shipping</b>	Ice bags
<b>Buffer</b>	PBS, 50% glycerol, 0.05% Proclin 300, 0.05%protective protein
<b>Purification</b>	Protein A

**Application**

<b>Dilution Ratio</b>	WB 1:500-1:2000,IHC 1:200-1:1000,ICC/IF 1:200-1:1000,ELISA 1:5000-1:20000,IP 1:50-1:200
<b>Molecular Weight</b>	Calculated MW:104kD;Observed MW:104kD

**Antigen Information**

<b>Gene Name</b>	ACTN2/ACTN3
<b>Alternative Names</b>	ACTN2;Alpha-actinin-2;Alpha-actinin skeletal muscle isoform 2;F-actin cross-linking protein
<b>Gene ID</b>	88.0
<b>SwissProt ID</b>	P35609
<b>Immunogen</b>	A synthetic peptide of human Sarcomeric Alpha Actinin

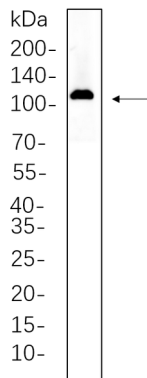
**Background**

Cell localization:Cytoplasm, myofibril, sarcomere, Z line . Colocalizes with MYOZ1 and FLNC at the Z-lines of skeletal muscle..Alpha actinins belong to the spectrin gene superfamily which represents a diverse group of cytoskeletal proteins, including the alpha and beta spectrins and dystrophins. Alpha actinin is an actin-binding protein with multiple roles in different

cell types. In nonmuscle cells, the cytoskeletal isoform is found along microfilament bundles and adherens-type junctions, where it is involved in binding actin to the membrane. In contrast, skeletal, cardiac, and smooth muscle isoforms are localized to the Z-disc and analogous dense bodies, where they help anchor the myofibrillar actin filaments. This gene encodes a muscle-specific, alpha actinin isoform that is expressed in both skeletal and cardiac muscles. Several transcript variants encoding different isoforms have been found for this gene. [provided by RefSeq, May 2013],

## Research Area

## Image Data



H9C2 whole cell lysates were separated by 10% SDS-PAGE, and the membrane was blotted with Actinin- $\alpha$ 2 Rabbit Monoclonal Antibody(1:1000). The HRP-conjugated Goat anti-Rabbit IgG(H + L) antibody was used to detect the antibody.