

Product Name: ZEB1 (16B4) Rabbit Monoclonal Antibody
Catalog #: AMRe20076

Summary

Production Name	ZEB1 (16B4) Rabbit Monoclonal Antibody
Description	Rabbit Monoclonal Antibody
Host	Rabbit
Application	WB,IHC-P,ICC/IF,FC,IF-P
Reactivity	Human

Performance

Conjugation	Unconjugated
Modification	Unmodified
Isotype	IgG
Clonality	Monoclonal
Form	Liquid
Storage	Store at 4°C short term. Aliquot and store at -20°C long term. Avoid freeze/thaw cycles. Rabbit IgG in phosphate buffered saline , pH 7.4, 150mM NaCl, 0.02% New type
Buffer	preservative N and 50% glycerol. Store at +4°C short term. Store at -20°C long term. Avoid freeze / thaw cycle.
Purification	Affinity purification

Immunogen

Gene Name	ZEB1
Alternative Names	BZP; TCF8; AREB6; FECD6; NIL2A; PPCD3; ZFHPEP; ZFHX1A; DELTAEF1;
Gene ID	6935.0
SwissProt ID	P37275.

Application

Dilution Ratio	WB 1:1000, IHC-P/IF-P 1:100, ICC/IF 1:100-1:200, FCM 1:20-1:50
Molecular Weight	124kDa

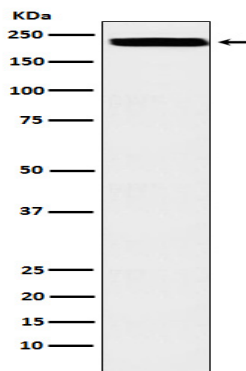
Product Name: ZEB1 (16B4) Rabbit Monoclonal Antibody
Catalog #: AMRe20076

Background

Inhibits interleukin-2 (IL-2) gene expression. May be responsible for transcriptional repression of the IL-2 gene. Enhances or represses the promoter activity of the ATP1A1 gene depending on the quantity of cDNA and on the cell type. Acts as a transcriptional repressor. Inhibits interleukin-2 (IL-2) gene expression. Enhances or represses the promoter activity of the ATP1A1 gene depending on the quantity of cDNA and on the cell type. Represses E-cadherin promoter and induces an epithelial-mesenchymal transition (EMT) by recruiting SMARCA4/BRG1. Represses BCL6 transcription in the presence of the corepressor CTBP1. Positively regulates neuronal differentiation. Represses RCOR1 transcription activation during neurogenesis. Represses transcription by binding to the E box (5'-CANNTG-3'). Promotes tumorigenicity by repressing stemness-inhibiting microRNAs.

Research Area

Image Data



Western blot analysis of AREB6 expression in HEK293 cell lysate.

Note

For research use only.