

---

**Product Name: WTAP (4C15) Rabbit Monoclonal Antibody****Catalog #: AMRe19937**

For research use only.

**Summary**

<b>Description</b>	Recombinant rabbit monoclonal antibody
<b>Host</b>	Rabbit
<b>Application</b>	WB,IHC,ICC/IF,FC,IP
<b>Reactivity</b>	Human
<b>Conjugation</b>	Unconjugated
<b>Modification</b>	Unmodified
<b>Isotype</b>	IgG
<b>Clonality</b>	Monoclonal
<b>Form</b>	Liquid
<b>Concentration</b>	0.5mg/ml. The concentration of this product may be batch-dependent.
<b>Storage</b>	Aliquot and store at -20°C (valid for 12 months). Avoid freeze/thaw cycles.
<b>Shipping</b>	Ice bags
<b>Buffer</b>	Supplied in 50mM Tris-Glycine(pH 7.4), 0.15M NaCl, 40%Glycerol, 0.01% New type preservative N and 0.05% protective protein.
<b>Purification</b>	Affinity purification

**Application**

<b>Dilution Ratio</b>	WB 1:500-1:2000,IHC 1:50-1:200,ICC/IF 1:200-1:500,FC 1:200-1:500,IP 1:20-1:50
<b>Molecular Weight</b>	44kDa

**Antigen Information**

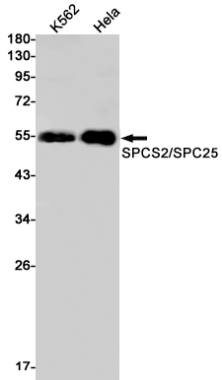
<b>Gene Name</b>	WTAP
<b>Alternative Names</b>	
<b>Gene ID</b>	9589.0
<b>SwissProt ID</b>	Q15007
<b>Immunogen</b>	Recombinant protein of human WTAP

**Background**

## Research Area

Epigenetics and Nuclear Signaling

## Image Data



Western blot detection of SPCS2/SPC25 in K562,HeLa cell lysates using SPCS2/SPC25 antibody(1:1000 diluted).