

Product Name: VGLUT1 (15S18) Rabbit Monoclonal Antibody**Catalog #: AMRe19788**

For research use only.

Summary

Description	Recombinant rabbit monoclonal antibody
Host	Rabbit
Application	WB,IHC,ICC/IF,IP
Reactivity	Human,Mouse,Rat
Conjugation	Unconjugated
Modification	Unmodified
Isotype	IgG
Clonality	Monoclonal
Form	Liquid
Concentration	0.25mg/ml. The concentration of this product may be batch-dependent.
Storage	Aliquot and store at -20°C (valid for 12 months). Avoid freeze/thaw cycles.
Shipping	Ice bags
Buffer	Rabbit IgG in phosphate buffered saline , pH 7.4, 150mM NaCl, 0.02% New type preservative N and 50% glycerol. Store at +4°C short term. Store at -20°C long term. Avoid freeze / thaw cycle.
Purification	Affinity purification

Application

Dilution Ratio	WB 1:500-1:2000,IHC 1:500-1:2000,ICC/IF 1:100-1:200,IP 1:20-1:50
Molecular Weight	62kDa

Antigen Information

Gene Name	SLC17A7
Alternative Names	BNPI; Slc17a7; VGluT1;
Gene ID	57030.0
SwissProt ID	Q9P2U7
Immunogen	A synthetic peptide of human VGLUT1

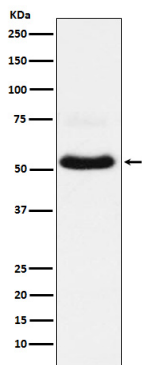
Background

Mediates the uptake of glutamate into synaptic vesicles at presynaptic nerve terminals of excitatory neural cells. May also

mediate the transport of inorganic phosphate. Mediates the uptake of glutamate into synaptic vesicles at presynaptic nerve terminals of excitatory neural cells. May also mediate the transport of inorganic phosphate.

Research Area

Image Data



Western blot analysis of VGLUT1 expression in Neuro-2a cell lysate.