
Product Name: TTF1 (11V4) Rabbit Monoclonal Antibody**Catalog #: AMRe19398**

For research use only.

Summary

Description	Recombinant rabbit monoclonal antibody
Host	Rabbit
Application	WB,IHC
Reactivity	Human,Mouse,Rat
Conjugation	Unconjugated
Modification	Unmodified
Isotype	IgG
Clonality	Monoclonal
Form	Liquid
Concentration	0.3mg/ml. The concentration of this product may be batch-dependent.
Storage	Aliquot and store at -20°C (valid for 12 months). Avoid freeze/thaw cycles.
Shipping	Ice bags
Buffer	Rabbit IgG in phosphate buffered saline , pH 7.4, 150mM NaCl, 0.02% New type preservative N and 50% glycerol. Store at +4°C short term. Store at -20°C long term. Avoid freeze / thaw cycle.
Purification	Affinity purification

Application

Dilution Ratio	WB 1:1000-1:5000,IHC 1:50-1:200
Molecular Weight	39kDa

Antigen Information

Gene Name	NKX2-1
Alternative Names	BCH; BHC; NK2; NKX2.1; NKX2A; TEBP; Thyroid nuclear factor 1; Tinman; TITF1; TTF1;
Gene ID	7080.0
SwissProt ID	P43699
Immunogen	A synthetic peptide of human TTF1

Background

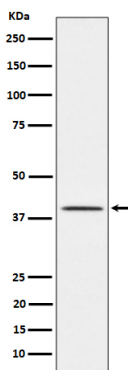
Transcription factor that binds and activates the promoter of thyroid specific genes such as thyroglobulin, thyroperoxidase, and

thyrotropin receptor. Transcription factor that binds and activates the promoter of thyroid specific genes such as thyroglobulin, thyroperoxidase, and thyrotropin receptor. Crucial in the maintenance of the thyroid differentiation phenotype. May play a role in lung development and surfactant homeostasis. Forms a regulatory loop with GRHL2 that coordinates lung epithelial cell morphogenesis and differentiation. Activates the transcription of GNRHR and plays a role in enhancing the circadian oscillation of its gene expression. Represses the transcription of the circadian transcriptional repressor NR1D1 (By similarity).

Research Area

Epigenetics and Nuclear Signaling

Image Data



Western blot analysis of TTF1 expression in Rat lung cell lysate.