

**Product Name: TSH beta (11Y4) Rabbit Monoclonal Antibody****Catalog #: AMRe19361**

For research use only.

**Summary**

<b>Description</b>	Recombinant rabbit monoclonal antibody
<b>Host</b>	Rabbit
<b>Application</b>	WB
<b>Reactivity</b>	Human
<b>Conjugation</b>	Unconjugated
<b>Modification</b>	Unmodified
<b>Isotype</b>	IgG
<b>Clonality</b>	Monoclonal
<b>Form</b>	Liquid
<b>Concentration</b>	0.5mg/ml. The concentration of this product may be batch-dependent.
<b>Storage</b>	Aliquot and store at -20°C (valid for 12 months). Avoid freeze/thaw cycles.
<b>Shipping</b>	Ice bags
<b>Buffer</b>	Rabbit IgG in phosphate buffered saline , pH 7.4, 150mM NaCl, 0.02% New type preservative N and 50% glycerol. Store at +4°C short term. Store at -20°C long term. Avoid freeze / thaw cycle.
<b>Purification</b>	Affinity purification

**Application**

<b>Dilution Ratio</b>	WB 1:1000-1:5000
<b>Molecular Weight</b>	16kDa

**Antigen Information**

<b>Gene Name</b>	TSHB
<b>Alternative Names</b>	CHNG4; TSHB;
<b>Gene ID</b>	7252.0
<b>SwissProt ID</b>	P01222
<b>Immunogen</b>	A synthetic peptide of human TSH beta

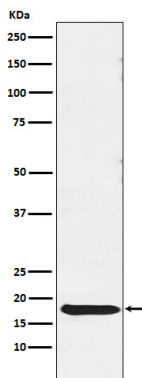
**Background**

Various hormones are secreted from the anterior pituitary during development and growth. Thyroid Stimulating Hormone

(TSH) is secreted from the anterior pituitary and controls thyroid structure and metabolism. Indispensable for the control of thyroid structure and metabolism.

## Research Area

## Image Data



Western blot analysis of TSH beta expression in Human pituitary lysate.