
Product Name: TGFBI (10L15) Rabbit Monoclonal Antibody**Catalog #: AMRe18853**

For research use only.

Summary

Description	Recombinant rabbit monoclonal antibody
Host	Rabbit
Application	WB,IHC,ICC/IF
Reactivity	Human,Mouse,Rat
Conjugation	Unconjugated
Modification	Unmodified
Isotype	IgG
Clonality	Monoclonal
Form	Liquid
Concentration	0.5mg/ml. The concentration of this product may be batch-dependent.
Storage	Aliquot and store at -20°C (valid for 12 months). Avoid freeze/thaw cycles.
Shipping	Ice bags
Buffer	Supplied in 50mM Tris-Glycine(pH 7.4), 0.15M NaCl, 40%Glycerol, 0.01% New type preservative N and 0.05% protective protein.
Purification	Affinity purification

Application

Dilution Ratio	WB 1:1000-1:5000,IHC 1:100-1:200,ICC/IF 1:50-1:100
Molecular Weight	54kDa

Antigen Information

Gene Name	TGFBI
Alternative Names	Beta ig; Beta ig h3; Beta ig-h3; BGH3_HUMAN; Big h3; BIGH3; CDB1; CDG2; CDGG1; CSD; CSD1; CSD2; CSD3; EBMD; Kerato epithelin; Kerato-epithelin; LCD1;
Gene ID	7045.0
SwissProt ID	Q15582
Immunogen	A synthetic peptide of human TGFBI

Background

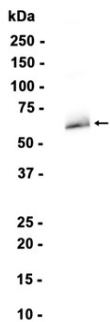
TGFBI is a RGD-containing protein that binds to type I, II and IV collagens. The RGD motif is found in many extracellular matrix

proteins modulating cell adhesion and serves as a ligand recognition sequence for several integrins. TGFBI plays a role in cell-collagen interactions and may be involved in endochondrial bone formation in cartilage. TGFBI is induced by transforming growth factor-beta and acts to inhibit cell adhesion. Plays a role in cell adhesion (PubMed:8024701). May play a role in cell-collagen interactions (By similarity).

Research Area

Image Data

Human fetal kidney



Western blot analysis of extracts from Human fetal kidney tissue using TGFBI (10L15) Rabbit Monoclonal Antibody at 1:1000.