
Product Name: TCP1 beta (4A10) Rabbit Monoclonal Antibody**Catalog #: AMRe18743**

For research use only.

Summary

Description	Recombinant rabbit monoclonal antibody
Host	Rabbit
Application	WB,IHC,ICC/IF,FC,IP
Reactivity	Human,Mouse,Rat
Conjugation	Unconjugated
Modification	Unmodified
Isotype	IgG
Clonality	Monoclonal
Form	Liquid
Concentration	0.5mg/ml. The concentration of this product may be batch-dependent.
Storage	Aliquot and store at -20°C (valid for 12 months). Avoid freeze/thaw cycles.
Shipping	Ice bags
Buffer	Rabbit IgG in phosphate buffered saline , pH 7.4, 150mM NaCl, 0.02% New type preservative N and 50% glycerol. Store at +4°C short term. Store at -20°C long term. Avoid freeze / thaw cycle.
Purification	Affinity purification

Application

Dilution Ratio	WB 1:2000-1:10000,IHC 1:50-1:100,ICC/IF 1:20-1:50,FC 1:20-1:50,IP 1:20-1:50
Molecular Weight	57kDa

Antigen Information

Gene Name	CCT2
Alternative Names	CCTB; 99D8.1; PRO1633; CCT-beta; MGC142074; MGC142076; TCP-1-beta;
Gene ID	10576.0
SwissProt ID	P78371
Immunogen	A synthetic peptide of human CCT2

Background

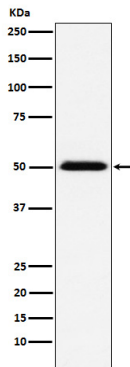
Molecular chaperone; assists the folding of proteins upon ATP hydrolysis. As part of the BBS/CCT complex may play a role in the

assembly of BBSome, a complex involved in ciliogenesis regulating transports vesicles to the cilia. Known to play a role, in vitro, in the folding of actin and tubulin. Component of the chaperonin-containing T-complex (TRiC), a molecular chaperone complex that assists the folding of proteins upon ATP hydrolysis (PubMed:25467444). The TRiC complex mediates the folding of WRAP53/TCAB1, thereby regulating telomere maintenance (PubMed:25467444). As part of the TRiC complex may play a role in the assembly of BBSome, a complex involved in ciliogenesis regulating transports vesicles to the cilia (PubMed:20080638). The TRiC complex plays a role in the folding of actin and tubulin (Probable).

Research Area

Signal Transduction

Image Data



Western blot analysis of TCP1 beta expression in MCF-7 cell lysate.