
Product Name: Somatostatin Receptor 1 (7R7) Rabbit Monoclonal Antibody**Catalog #: AMRe18110**

For research use only.

Summary

Description	Recombinant rabbit monoclonal antibody
Host	Rabbit
Application	WB,ICC/IF
Reactivity	Human
Conjugation	Unconjugated
Modification	Unmodified
Isotype	IgG
Clonality	Monoclonal
Form	Liquid
Concentration	0.5mg/ml. The concentration of this product may be batch-dependent.
Storage	Aliquot and store at -20°C (valid for 12 months). Avoid freeze/thaw cycles.
Shipping	Ice bags
Buffer	Rabbit IgG in phosphate buffered saline , pH 7.4, 150mM NaCl, 0.02% New type preservative N and 50% glycerol. Store at +4°C short term. Store at -20°C long term. Avoid freeze / thaw cycle.
Purification	Affinity purification

Application

Dilution Ratio	WB 1:500-1:2000,ICC/IF 1:200-1:500
Molecular Weight	43kDa

Antigen Information

Gene Name	SSTR1
Alternative Names	Somatostatin R1; SRIF2; SS1R; Sstr1;
Gene ID	6751.0
SwissProt ID	P30872
Immunogen	A synthetic peptide of human Somatostatin Receptor 1/SSTR1

Background

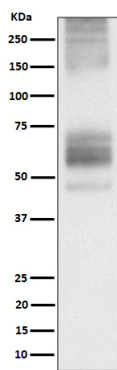
Receptor for somatostatin with higher affinity for somatostatin-14 than -28. This receptor is coupled via pertussis toxin

sensitive G proteins to inhibition of adenylyl cyclase. Receptor for somatostatin with higher affinity for somatostatin-14 than -28. This receptor is coupled via pertussis toxin sensitive G proteins to inhibition of adenylyl cyclase. In addition it stimulates phosphotyrosine phosphatase and Na(+)/H(+) exchanger via pertussis toxin insensitive G proteins.

Research Area

Neuroactive ligand-receptor interaction;

Image Data



Western blot analysis of Somatostatin Receptor 1 expression in 293T transfected with Somatostatin Receptor 1 cell lysate.