

Product Name: SOD2 (12J6) Rabbit Monoclonal Antibody**Catalog #: AMRe18098**

For research use only.

Summary

Description	Recombinant rabbit monoclonal antibody
Host	Rabbit
Application	WB,IHC,IF-P
Reactivity	Human,Mouse,Rat
Conjugation	Unconjugated
Modification	Unmodified
Isotype	IgG
Clonality	Monoclonal
Form	Liquid
Concentration	0.3mg/ml. The concentration of this product may be batch-dependent.
Storage	Aliquot and store at -20°C (valid for 12 months). Avoid freeze/thaw cycles.
Shipping	Ice bags
Buffer	Rabbit IgG in phosphate buffered saline , pH 7.4, 150mM NaCl, 0.02% New type preservative N and 50% glycerol. Store at +4°C short term. Store at -20°C long term. Avoid freeze / thaw cycle.
Purification	Affinity purification

Application

Dilution Ratio	WB 1:500-1:2000,IHC 1:100-1:200,IF-P 1:100-1:200
Molecular Weight	25kDa

Antigen Information

Gene Name	SOD2
Alternative Names	SOD2; IPOB; MNSOD; MVCD6;
Gene ID	6648.0
SwissProt ID	P04179
Immunogen	A synthetic peptide of human SOD2

Background

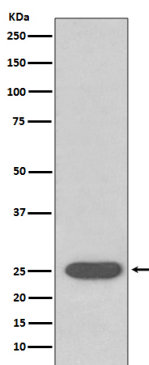
SOD-2 is a homotetrameric manganese enzyme (also known as MnSOD) that functions in the mitochondrion. ROS are

implicated in a wide range of degenerative processes, including Alzheimer' s disease, Parkinson' s disease and ischemic heart disease. Homozygous mutant mice, which lack SOD-2, exhibit dilated cardiomyopathy, accumulation of lipid in liver and skeletal muscle, metabolic acidosis, oxidative DNA damage and respiratory chain deficiencies in heart and skeletal muscle. Destroys superoxide anion radicals which are normally produced within the cells and which are toxic to biological systems.

Research Area

Cell Biology

Image Data



Western blot analysis of SOD2 expression in Rat brain lysate.