
Product Name: SLC6A1 / GAT1 (9T4) Rabbit Monoclonal Antibody**Catalog #: AMRe17960**

For research use only.

Summary

Description	Recombinant rabbit monoclonal antibody
Host	Rabbit
Application	WB
Reactivity	Human, Mouse, Rat
Conjugation	Unconjugated
Modification	Unmodified
Isotype	IgG
Clonality	Monoclonal
Form	Liquid
Concentration	0.5mg/ml. The concentration of this product may be batch-dependent.
Storage	Aliquot and store at -20°C (valid for 12 months). Avoid freeze/thaw cycles.
Shipping	Ice bags
Buffer	Rabbit IgG in phosphate buffered saline , pH 7.4, 150mM NaCl, 0.02% New type preservative N and 50% glycerol. Store at +4°C short term. Store at -20°C long term. Avoid freeze / thaw cycle.
Purification	Affinity purification

Application

Dilution Ratio	WB 1:1000-1:5000
Molecular Weight	67kDa

Antigen Information

Gene Name	SLC6A1
Alternative Names	GABATHG; GABATR; GABT1; GAT1; Slc6a1;
Gene ID	6529.0
SwissProt ID	P30531
Immunogen	A synthetic peptide of human GABA Transporter 1

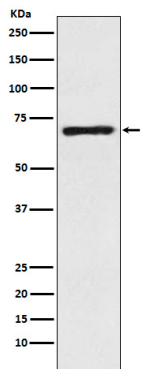
Background

Terminates the action of GABA by its high affinity sodium-dependent reuptake into presynaptic terminals. Terminates the

action of GABA by its high affinity sodium- dependent reuptake into presynaptic terminals.

Research Area

Image Data



Western blot analysis of GABA Transporter 1 / GAT 1 expression in Human fetal brain lysate.