

---

**Product Name: SDHB (5N7) Rabbit Monoclonal Antibody****Catalog #: AMRe17679**

For research use only.

**Summary**

<b>Description</b>	Recombinant rabbit monoclonal antibody
<b>Host</b>	Rabbit
<b>Application</b>	WB,IHC,IF,IP,ELISA
<b>Reactivity</b>	Human,Mouse,Rat,Fish
<b>Conjugation</b>	Unconjugated
<b>Modification</b>	Unmodified
<b>Isotype</b>	IgG
<b>Clonality</b>	Monoclonal
<b>Form</b>	Liquid
<b>Concentration</b>	0.3mg/ml. The concentration of this product may be batch-dependent.
<b>Storage</b>	Aliquot and store at -20°C (valid for 12 months). Avoid freeze/thaw cycles.
<b>Shipping</b>	Ice bags
<b>Buffer</b>	Rabbit IgG in phosphate buffered saline , pH 7.4, 150mM NaCl, 0.02% New type preservative N and 50% glycerol. Store at +4°C short term. Store at -20°C long term. Avoid freeze / thaw cycle.
<b>Purification</b>	Affinity purification

**Application**

<b>Dilution Ratio</b>	IHC 1:200-1:1000;WB 1:2000-1:10000;IF 1:200-1:1000;ELISA 1:5000-1:20000;IP 1:50-1:200;
<b>Molecular Weight</b>	32kDa

**Antigen Information**

<b>Gene Name</b>	SDHB
<b>Alternative Names</b>	Iron-sulfur subunit of complex II; SDHB; SDH; SDH1; PGL4;
<b>Gene ID</b>	6390.0
<b>SwissProt ID</b>	P21912
<b>Immunogen</b>	A synthetic peptide of human SDHB

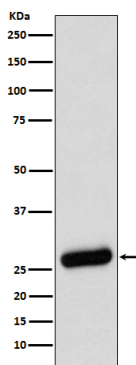
**Background**

Iron-sulfur protein (IP) subunit of succinate dehydrogenase (SDH) that is involved in complex II of the mitochondrial electron

transport chain and is responsible for transferring electrons from succinate to ubiquinone (coenzyme Q). Iron-sulfur protein (IP) subunit of succinate dehydrogenase (SDH) that is involved in complex II of the mitochondrial electron transport chain and is responsible for transferring electrons from succinate to ubiquinone (coenzyme Q).

## Research Area

## Image Data



Western blot analysis of SDHB expression in A431 cell lysate.