

**Product Name: SBDS (5N11) Rabbit Monoclonal Antibody****Catalog #: AMRe17619**

For research use only.

**Summary**

<b>Description</b>	Recombinant rabbit monoclonal antibody
<b>Host</b>	Rabbit
<b>Application</b>	WB
<b>Reactivity</b>	Human, Mouse, Rat
<b>Conjugation</b>	Unconjugated
<b>Modification</b>	Unmodified
<b>Isotype</b>	IgG
<b>Clonality</b>	Monoclonal
<b>Form</b>	Liquid
<b>Concentration</b>	0.5mg/ml. The concentration of this product may be batch-dependent.
<b>Storage</b>	Aliquot and store at -20°C (valid for 12 months). Avoid freeze/thaw cycles.
<b>Shipping</b>	Ice bags
<b>Buffer</b>	Rabbit IgG in phosphate buffered saline , pH 7.4, 150mM NaCl, 0.02% New type preservative N and 50% glycerol. Store at +4°C short term. Store at -20°C long term. Avoid freeze / thaw cycle.
<b>Purification</b>	Affinity purification

**Application**

<b>Dilution Ratio</b>	WB 1:2000-1:20000
<b>Molecular Weight</b>	29kDa

**Antigen Information**

<b>Gene Name</b>	SBDS
<b>Alternative Names</b>	CGI 97; sbds; SDS; SWDS;
<b>Gene ID</b>	51119.0
<b>SwissProt ID</b>	Q9Y3A5
<b>Immunogen</b>	A synthetic peptide of human SBDS

**Background**

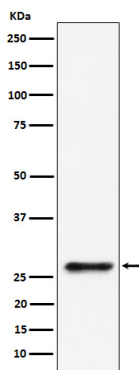
Required for the assembly of mature ribosomes and ribosome biogenesis. Required for the assembly of mature ribosomes and

ribosome biogenesis. Together with EFL1, triggers the GTP-dependent release of EIF6 from 60S pre-ribosomes in the cytoplasm, thereby activating ribosomes for translation competence by allowing 80S ribosome assembly and facilitating EIF6 recycling to the nucleus, where it is required for 60S rRNA processing and nuclear export. Required for normal levels of protein synthesis. May play a role in cellular stress resistance. May play a role in cellular response to DNA damage. May play a role in cell proliferation.

## Research Area

Epigenetics and Nuclear Signaling

## Image Data



Western blot analysis of SBDS expression in 293 cell lysate.