

Product Name: Renin (11L9) Rabbit Monoclonal Antibody**Catalog #: AMRe17016**

For research use only.

Summary

Description	Recombinant rabbit monoclonal antibody
Host	Rabbit
Application	WB,FC
Reactivity	Human
Conjugation	Unconjugated
Modification	Unmodified
Isotype	IgG
Clonality	Monoclonal
Form	Liquid
Concentration	0.5mg/ml. The concentration of this product may be batch-dependent.
Storage	Aliquot and store at -20°C (valid for 12 months). Avoid freeze/thaw cycles.
Shipping	Ice bags
Buffer	Rabbit IgG in phosphate buffered saline , pH 7.4, 150mM NaCl, 0.02% New type preservative N and 50% glycerol. Store at +4°C short term. Store at -20°C long term. Avoid freeze / thaw cycle.
Purification	Affinity purification

Application

Dilution Ratio	WB 1:1000-1:5000,FC 1:10-1:100
Molecular Weight	45kDa

Antigen Information

Gene Name	REN
Alternative Names	Angiotensinogenase; HNFJ2; REN; Ren1; Renin;
Gene ID	5972.0
SwissProt ID	P00797
Immunogen	A synthetic peptide of human Renin

Background

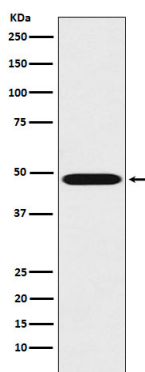
Renin is a highly specific endopeptidase, whose only known function is to generate angiotensin I from angiotensinogen in the

plasma, initiating a cascade of reactions that produce an elevation of blood pressure and increased sodium retention by the kidney. Renin is a highly specific endopeptidase, whose only known function is to generate angiotensin I from angiotensinogen in the plasma, initiating a cascade of reactions that produce an elevation of blood pressure and increased sodium retention by the kidney.

Research Area

Renin-angiotensin system;

Image Data



Western blot analysis of Renin expression in K562 cell lysate.