

---

**Product Name: RAD52 (13D10) Rabbit Monoclonal Antibody****Catalog #: AMRe16847**

For research use only.

**Summary**

<b>Description</b>	Recombinant rabbit monoclonal antibody
<b>Host</b>	Rabbit
<b>Application</b>	WB
<b>Reactivity</b>	Human
<b>Conjugation</b>	Unconjugated
<b>Modification</b>	Unmodified
<b>Isotype</b>	IgG
<b>Clonality</b>	Monoclonal
<b>Form</b>	Liquid
<b>Concentration</b>	0.5mg/ml. The concentration of this product may be batch-dependent.
<b>Storage</b>	Aliquot and store at -20°C (valid for 12 months). Avoid freeze/thaw cycles.
<b>Shipping</b>	Ice bags
<b>Buffer</b>	Supplied in 50mM Tris-Glycine(pH 7.4), 0.15M NaCl, 40%Glycerol, 0.01% New type preservative N and 0.05% protective protein.
<b>Purification</b>	Affinity purification

**Application**

<b>Dilution Ratio</b>	WB 1:1000-1:5000
<b>Molecular Weight</b>	46kDa

**Antigen Information**

<b>Gene Name</b>	RAD52
<b>Alternative Names</b>	Rad52; RAD52 homolog;
<b>Gene ID</b>	5893.0
<b>SwissProt ID</b>	P43351
<b>Immunogen</b>	A synthetic peptide of human RAD52

**Background**

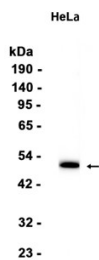
Involved in double-stranded break repair. Plays a central role in genetic recombination and DNA repair by promoting the annealing of complementary single-stranded DNA and by stimulation of the RAD51 recombinase. Involved in double-stranded

break repair. Plays a central role in genetic recombination and DNA repair by promoting the annealing of complementary single-stranded DNA and by stimulation of the RAD51 recombinase.

## Research Area

Homologous recombination;

## Image Data



Western blot analysis of extracts from HeLa cells using RAD52 (13D10) Rabbit Monoclonal Antibody at 1:1000.