

**Product Name: Rab4 (18S8) Rabbit Monoclonal Antibody****Catalog #: AMRe16789**

For research use only.

**Summary**

<b>Description</b>	Recombinant rabbit monoclonal antibody
<b>Host</b>	Rabbit
<b>Application</b>	WB,ICC/IF,FC,IP
<b>Reactivity</b>	Human,Mouse,Rat
<b>Conjugation</b>	Unconjugated
<b>Modification</b>	Unmodified
<b>Isotype</b>	IgG
<b>Clonality</b>	Monoclonal
<b>Form</b>	Liquid
<b>Concentration</b>	0.5mg/ml. The concentration of this product may be batch-dependent.
<b>Storage</b>	Aliquot and store at -20°C (valid for 12 months). Avoid freeze/thaw cycles.
<b>Shipping</b>	Ice bags
<b>Buffer</b>	Rabbit IgG in phosphate buffered saline , pH 7.4, 150mM NaCl, 0.02% New type preservative N and 50% glycerol. Store at +4°C short term. Store at -20°C long term. Avoid freeze / thaw cycle.
<b>Purification</b>	Affinity purification

**Application**

<b>Dilution Ratio</b>	WB 1:1000-1:5000,ICC/IF 1:200-1:1000,FC 1:100-1:200,IP 1:10-1:100
<b>Molecular Weight</b>	24kDa

**Antigen Information**

<b>Gene Name</b>	RAB4A
<b>Alternative Names</b>	Rab4 ; RAB4A; HRES 1 ;RAB4; Ras related protein Rab 4A;
<b>Gene ID</b>	5867.0
<b>SwissProt ID</b>	P20338
<b>Immunogen</b>	A synthetic peptide of human Rab4

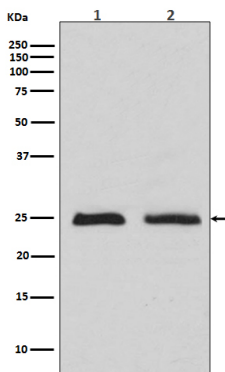
**Background**

The protein encoded by this gene belongs to the rab family. Rab4A protein is involved in the regulation of procathepsin L

secretion, it was either inhibited by expression of a Rab4A dominant-negative mutant or increased by overexpression of the wild-type Rab4A in human melanoma cells. Small GTPase which cycles between an active GTP-bound and an inactive GDP-bound state (PubMed:15907487, PubMed:16034420). Involved in protein transport (PubMed:29425100). Plays a role in vesicular traffic. Mediates VEGFR2 endosomal trafficking to enhance VEGFR2 signaling (PubMed:29425100). Acts as a regulator of platelet alpha- granule release during activation and aggregation of platelets (By similarity).

## Research Area

## Image Data



Western blot analysis of Rab4 expression in (1)MCF7 cell lysates (2)HeLa cell lysate.