

Product Name: PTGER2 (10O13) Rabbit Monoclonal Antibody**Catalog #: AMRe16644**

For research use only.

Summary

Description	Recombinant rabbit monoclonal antibody
Host	Rabbit
Application	WB,ICC/IF,FC
Reactivity	Human,Mouse,Rat
Conjugation	Unconjugated
Modification	Unmodified
Isotype	IgG
Clonality	Monoclonal
Form	Liquid
Concentration	0.5mg/ml. The concentration of this product may be batch-dependent.
Storage	Aliquot and store at -20°C (valid for 12 months). Avoid freeze/thaw cycles.
Shipping	Ice bags
Buffer	Rabbit IgG in phosphate buffered saline , pH 7.4, 150mM NaCl, 0.02% New type preservative N and 50% glycerol. Store at +4°C short term. Store at -20°C long term. Avoid freeze / thaw cycle.
Purification	Affinity purification

Application

Dilution Ratio	WB 1:1000-1:5000,ICC/IF 1:200-1:500,FC 1:100-1:500
Molecular Weight	40kDa

Antigen Information

Gene Name	PTGER2
Alternative Names	EP2; PGE2 receptor EP2 subtype; Prostaglandin E receptor 2 subtype EP2 53kDa; Prostaglandin E2 receptor EP2 subtype; Prostanoid EP2 receptor; Ptger2;
Gene ID	5732.0
SwissProt ID	P43116
Immunogen	A synthetic peptide of human Prostaglandin E Receptor EP2

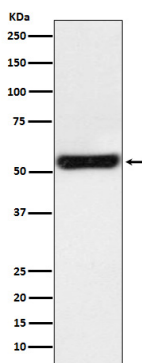
Background

Receptor for prostaglandin E2 (PGE2). The activity of this receptor is mediated by G(s) proteins that stimulate adenylate cyclase. The subsequent raise in intracellular cAMP is responsible for the relaxing effect of this receptor on smooth muscle. Receptor for prostaglandin E2 (PGE2). The activity of this receptor is mediated by G(s) proteins that stimulate adenylate cyclase. The subsequent raise in intracellular cAMP is responsible for the relaxing effect of this receptor on smooth muscle.

Research Area

Neuroactive ligand-receptor interaction;

Image Data



Western blot analysis of PTGER2 expression in JAR cell lysate.