

Product Name: PSA/KLK3 (9M11) Rabbit Monoclonal Antibody**Catalog #: AMRe16576**

For research use only.

Summary

Description	Recombinant rabbit monoclonal antibody
Host	Rabbit
Application	WB,IHC,IF-P
Reactivity	Human
Conjugation	Unconjugated
Modification	Unmodified
Isotype	IgG
Clonality	Monoclonal
Form	Liquid
Concentration	0.5mg/ml. The concentration of this product may be batch-dependent.
Storage	Aliquot and store at -20°C (valid for 12 months). Avoid freeze/thaw cycles.
Shipping	Ice bags
Buffer	Rabbit IgG in phosphate buffered saline , pH 7.4, 150mM NaCl, 0.02% New type preservative N and 50% glycerol. Store at +4°C short term. Store at -20°C long term. Avoid freeze / thaw cycle.
Purification	Affinity purification

Application

Dilution Ratio	WB 1:500-1:2000,IHC 1:200-1:1000,IF-P 1:200-1:1000
Molecular Weight	29kDa

Antigen Information

Gene Name	KLK3
Alternative Names	Prostate-specific antigen; PSA; Gamma-seminoprotein; Semin; Kallikrein-3; P-30 antigen; Semenogelase; KLK3; APS;
Gene ID	354.0
SwissProt ID	P07288
Immunogen	A synthetic peptide of human Prostate Specific Antigen

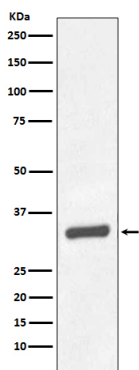
Background

PSA/KLK3 is a member of the glandular kallikrein subfamily of serine proteases. Upon cleavage of 7 amino-terminal amino acids, it is activated to liquefy semen in the seminal coagulum. Although PSA/KLK3 is produced in healthy individuals, investigators have found abnormally high levels in the blood of men with advanced prostate cancer. Hydrolyzes semenogelin-1 thus leading to the liquefaction of the seminal coagulum.

Research Area

Neuroscience

Image Data



Western blot analysis of PSA/KLK3 expression in Human prostate carcinoma tissue lysate.