

Product Name: PPP2R5E (16A15) Rabbit Monoclonal Antibody**Catalog #: AMRe16432**

For research use only.

Summary

Description	Recombinant rabbit monoclonal antibody
Host	Rabbit
Application	WB,IHC,ICC/IF,FC,IP
Reactivity	Human,Mouse,Rat
Conjugation	Unconjugated
Modification	Unmodified
Isotype	IgG
Clonality	Monoclonal
Form	Liquid
Concentration	0.5mg/ml. The concentration of this product may be batch-dependent.
Storage	Aliquot and store at -20°C (valid for 12 months). Avoid freeze/thaw cycles.
Shipping	Ice bags
Buffer	Supplied in 50mM Tris-Glycine(pH 7.4), 0.15M NaCl, 40%Glycerol, 0.01% New type preservative N and 0.05% protective protein.
Purification	Affinity purification

Application

Dilution Ratio	WB 1:1000-1:5000,IHC 1:200-1:500,ICC/IF 1:200-1:500,FC 1:200-1:1000,IP 1:50-1:100
Molecular Weight	55kDa

Antigen Information

Gene Name	PPP2R5E
Alternative Names	PPP2R5E;
Gene ID	5529.0
SwissProt ID	Q16537
Immunogen	A synthetic peptide of human PPP2R5E

Background

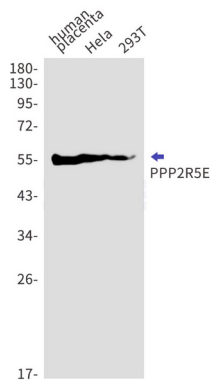
The B regulatory subunit might modulate substrate selectivity and catalytic activity, and also might direct the localization of the catalytic enzyme to a particular subcellular compartment. The B regulatory subunit might modulate substrate selectivity and

catalytic activity, and also might direct the localization of the catalytic enzyme to a particular subcellular compartment.

Research Area

Neuroscience

Image Data



Western blot detection of PPP2R5E in human placenta, HeLa, 293T cell lysates using PPP2R5E antibody (1:1000 diluted).