

Product Name: Plexin A1 (3J3) Rabbit Monoclonal Antibody**Catalog #: AMRe16268**

For research use only.

Summary

Description	Recombinant rabbit monoclonal antibody
Host	Rabbit
Application	WB,FC
Reactivity	Human,Mouse,Rat
Conjugation	Unconjugated
Modification	Unmodified
Isotype	IgG
Clonality	Monoclonal
Form	Liquid
Concentration	0.5mg/ml. The concentration of this product may be batch-dependent.
Storage	Aliquot and store at -20°C (valid for 12 months). Avoid freeze/thaw cycles.
Shipping	Ice bags
Buffer	Rabbit IgG in phosphate buffered saline , pH 7.4, 150mM NaCl, 0.02% New type preservative N and 50% glycerol. Store at +4°C short term. Store at -20°C long term. Avoid freeze / thaw cycle.
Purification	Affinity purification

Application

Dilution Ratio	WB 1:500-1:2000,FC 1:20-1:50
Molecular Weight	211kDa

Antigen Information

Gene Name	PLXNA1
Alternative Names	NOV; NOV; Plexin-A1; Plexin1; PlexinA1; PLXN1; Plxna1;
Gene ID	5361.0
SwissProt ID	Q9UIW2
Immunogen	A synthetic peptide of human Plexin A1

Background

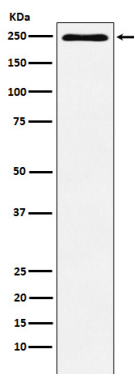
Plays a role in axon guidance, invasive growth and cell migration. Coreceptor for SEMA3A, SEMA3C, SEMA3F and SEMA6D.

Necessary for signaling by class 3 semaphorins and subsequent remodeling of the cytoskeleton. Plays a role in axon guidance, invasive growth and cell migration. Class 3 semaphorins bind to a complex composed of a neuropilin and a plexin. The plexin modulates the affinity of the complex for specific semaphorins, and its cytoplasmic domain is required for the activation of down-stream signaling events in the cytoplasm (By similarity).

Research Area

Neuroscience

Image Data



Western blot analysis of Plexin A1 expression in HUVEC cell lysate.