

**Product Name: PD-L1 (CD274) (5R18) Rabbit
Monoclonal Antibody
Catalog #: AMRe15922**

Summary

Production Name	PD-L1 (CD274) (5R18) Rabbit Monoclonal Antibody
Description	Rabbit Monoclonal Antibody
Host	Rabbit
Application	WB,IHC-P,ICC/IF,FC,IP,IF-P
Reactivity	Human

Performance

Conjugation	Unconjugated
Modification	Unmodified
Isotype	IgG
Clonality	Monoclonal
Form	Liquid
Storage	Store at 4°C short term. Aliquot and store at -20°C long term. Avoid freeze/thaw cycles. Rabbit IgG in phosphate buffered saline , pH 7.4, 150mM NaCl, 0.02% New type
Buffer	preservative N and 50% glycerol. Store at +4°C short term. Store at -20°C long term. Avoid freeze / thaw cycle.
Purification	Affinity purification

Immunogen

Gene Name	CD274
Alternative Names	B7-H; B7H1; PD-L1; PDCD1L1; PDCD1LG1; PDL1; CD274;
Gene ID	29126.0
SwissProt ID	Q9NZQ7.

Application

Dilution Ratio	WB 1:1000, IHC-P/IF-P 1:200-1:500, ICC/IF 1:100-1:200, FCM 1:100, IP 1:20-1:50
Molecular Weight	33kDa

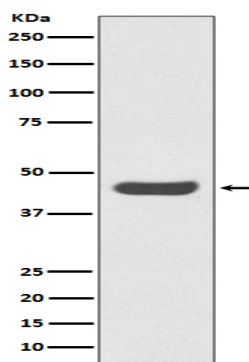
**Product Name: PD-L1 (CD274) (5R18) Rabbit
Monoclonal Antibody
Catalog #: AMRe15922**

Background

Programmed cell death ligand 1(CD274, or B7-H1, PD-L1), is the first member of B7 family to be discovered. B7 family molecules are type I transmembrane proteins belonging to the immunoglobulin superfamily. In concert with their CD28 family receptors, the B7s are key regulators of the adaptive immune response. CD274 is suggested a negative regulator of T and B cell, and play important role in mediating tolerance of lymphocytes to self-antigens. Plays a critical role in induction and maintenance of immune tolerance to self (PubMed:11015443, PubMed:28813417, PubMed:28813410). As a ligand for the inhibitory receptor PDCD1/PD-1, modulates the activation threshold of T-cells and limits T-cell effector response (PubMed:11015443, PubMed:28813417, PubMed:28813410). Through a yet unknown activating receptor, may costimulate T-cell subsets that predominantly produce interleukin-10 (IL10) (PubMed:10581077).

Research Area

Image Data



Western blot analysis of PD-L1 (CD274) expression in Ramos cell lysate.

Note

For research use only.