

Product Name: PDGF B (1X19) Rabbit Monoclonal Antibody**Catalog #: AMRe15899**

For research use only.

Summary

Description	Recombinant rabbit monoclonal antibody
Host	Rabbit
Application	WB,IHC,IF-P
Reactivity	Human,Mouse,Rat
Conjugation	Unconjugated
Modification	Unmodified
Isotype	IgG
Clonality	Monoclonal
Form	Liquid
Concentration	0.5mg/ml. The concentration of this product may be batch-dependent.
Storage	Aliquot and store at -20°C (valid for 12 months). Avoid freeze/thaw cycles.
Shipping	Ice bags
Buffer	Supplied in 50mM Tris-Glycine(pH 7.4), 0.15M NaCl, 40%Glycerol, 0.01% New type preservative N and 0.05% protective protein.
Purification	Affinity purification

Application

Dilution Ratio	WB 1:500-1:2000,IHC 1:20-1:100,IF-P 1:20-1:50
Molecular Weight	27kDa

Antigen Information

Gene Name	PDGFB
Alternative Names	PDGF2; Pdgfb; Platelet derived growth factor 2; Platelet derived growth factor B chain; Platelet derived growth factor beta; SIS; SSV;
Gene ID	5155.0
SwissProt ID	P01127
Immunogen	A synthetic peptide of human PDGF B

Background

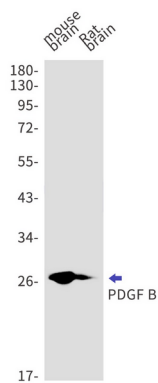
Growth factor that plays an essential role in the regulation of embryonic development, cell proliferation, cell migration, survival

and chemotaxis. Potent mitogen for cells of mesenchymal origin (PubMed:26599395). Growth factor that plays an essential role in the regulation of embryonic development, cell proliferation, cell migration, survival and chemotaxis. Potent mitogen for cells of mesenchymal origin (PubMed:26599395). Required for normal proliferation and recruitment of pericytes and vascular smooth muscle cells in the central nervous system, skin, lung, heart and placenta. Required for normal blood vessel development, and for normal development of kidney glomeruli. Plays an important role in wound healing. Signaling is modulated by the formation of heterodimers with PDGFA (By similarity).

Research Area

Cardiovascular

Image Data



Western blot detection of PDGF B in mouse brain, Rat brain cell lysates using PDGF B antibody(1:1000 diluted).