

Product Name: PCB (11N10) Rabbit Monoclonal Antibody**Catalog #: AMRe15815**

For research use only.

Summary

Description	Recombinant rabbit monoclonal antibody
Host	Rabbit
Application	WB
Reactivity	Human,Mouse,Rat
Conjugation	Unconjugated
Modification	Unmodified
Isotype	IgG
Clonality	Monoclonal
Form	Liquid
Concentration	0.5mg/ml. The concentration of this product may be batch-dependent.
Storage	Aliquot and store at -20°C (valid for 12 months). Avoid freeze/thaw cycles.
Shipping	Ice bags
Buffer	Supplied in 50mM Tris-Glycine(pH 7.4), 0.15M NaCl, 40%Glycerol, 0.01% New type preservative N and 0.05% protective protein.
Purification	Affinity purification

Application

Dilution Ratio	WB 1:1000-1:5000
Molecular Weight	130kDa

Antigen Information

Gene Name	PC
Alternative Names	PC; PCB; Pcx; Pyruvate carboxylase;
Gene ID	5091.0
SwissProt ID	P11498
Immunogen	A synthetic peptide of human PCB

Background

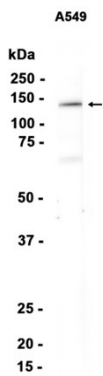
Pyruvate carboxylase catalyzes a 2-step reaction, involving the ATP-dependent carboxylation of the covalently attached biotin in the first step and the transfer of the carboxyl group to pyruvate in the second. Pyruvate carboxylase catalyzes a 2-step

reaction, involving the ATP-dependent carboxylation of the covalently attached biotin in the first step and the transfer of the carboxyl group to pyruvate in the second. Catalyzes in a tissue specific manner, the initial reactions of glucose (liver, kidney) and lipid (adipose tissue, liver, brain) synthesis from pyruvate.

Research Area

Citrate cycle (TCA cycle);Pyruvate metabolism;

Image Data



Western blot analysis of extracts from A549 cells using PCB (11N10) Rabbit Monoclonal Antibody at 1:1000.