

---

**Product Name: Parvalbumin (17B8) Rabbit Monoclonal Antibody****Catalog #: AMRe15775**

For research use only.

**Summary**

<b>Description</b>	Recombinant rabbit monoclonal antibody
<b>Host</b>	Rabbit
<b>Application</b>	WB,IHC,IP,IF-P
<b>Reactivity</b>	Human,Mouse,Rat
<b>Conjugation</b>	Unconjugated
<b>Modification</b>	Unmodified
<b>Isotype</b>	IgG
<b>Clonality</b>	Monoclonal
<b>Form</b>	Liquid
<b>Concentration</b>	0.3mg/ml. The concentration of this product may be batch-dependent.
<b>Storage</b>	Aliquot and store at -20°C (valid for 12 months). Avoid freeze/thaw cycles.
<b>Shipping</b>	Ice bags
<b>Buffer</b>	Rabbit IgG in phosphate buffered saline , pH 7.4, 150mM NaCl, 0.02% New type preservative N and 50% glycerol. Store at +4°C short term. Store at -20°C long term. Avoid freeze / thaw cycle.
<b>Purification</b>	Affinity purification

**Application**

<b>Dilution Ratio</b>	WB 1:1000-1:5000,IHC 1:200-1:500,IP 1:20-1:50,IF-P 1:200-1:500
<b>Molecular Weight</b>	12kDa

**Antigen Information**

<b>Gene Name</b>	PVALB
<b>Alternative Names</b>	Parvalbumin alpha; PVALB;
<b>Gene ID</b>	5816.0
<b>SwissProt ID</b>	P20472
<b>Immunogen</b>	Recombinant protein of human Parvalbumin

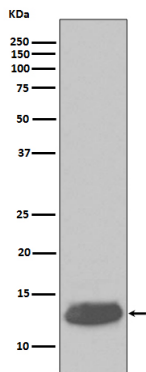
**Background**

In muscle, parvalbumin is thought to be involved in relaxation after contraction. It binds two calcium ions. In muscle,

parvalbumin is thought to be involved in relaxation after contraction. It binds two calcium ions.

## Research Area

## Image Data



Western blot analysis of Parvalbumin expression in human cerebellum lysate.