

---

**Product Name: Osteopontin (10W13) Rabbit Monoclonal Antibody****Catalog #: AMRe15526**

For research use only.

**Summary**

<b>Description</b>	Recombinant rabbit monoclonal antibody
<b>Host</b>	Rabbit
<b>Application</b>	WB,IHC,IF,IP,ELISA
<b>Reactivity</b>	Human,Mouse,Rat
<b>Conjugation</b>	Unconjugated
<b>Modification</b>	Unmodified
<b>Isotype</b>	IgG
<b>Clonality</b>	Monoclonal
<b>Form</b>	Liquid
<b>Concentration</b>	0.3mg/ml. The concentration of this product may be batch-dependent.
<b>Storage</b>	Aliquot and store at -20°C (valid for 12 months). Avoid freeze/thaw cycles.
<b>Shipping</b>	Ice bags
<b>Buffer</b>	Rabbit IgG in phosphate buffered saline , pH 7.4, 150mM NaCl, 0.02% New type preservative N and 50% glycerol. Store at +4°C short term. Store at -20°C long term. Avoid freeze / thaw cycle.
<b>Purification</b>	Affinity purification

**Application**

<b>Dilution Ratio</b>	IHC 1:200-1:1000;WB 1:2000-1:10000;IF 1:200-1:1000;ELISA 1:5000-1:20000;IP 1:50-1:200;
<b>Molecular Weight</b>	35kDa

**Antigen Information**

<b>Gene Name</b>	SPP1
<b>Alternative Names</b>	BNSP; Bone sialoprotein 1; bone sialoprotein I; BSPI; early T-lymphocyte activation 1; ETA-1; Nephropontin; OPN; Osteopontin; OSTP; Secreted phosphoprotein 1;
<b>Gene ID</b>	6696.0
<b>SwissProt ID</b>	P10451
<b>Immunogen</b>	Recombinant protein of human Osteopontin

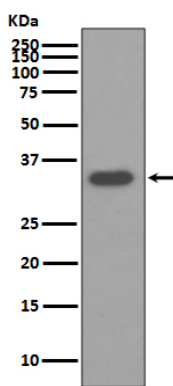
**Background**

osteopontin Binds tightly to hydroxyapatite. Appears to form an integral part of the mineralized matrix. Probably important to cell-matrix interaction. Belongs to the osteopontin family. Ligand for integrin alpha-V/beta-3. 4 isoforms of the human protein are produced by alternative splicing. Major non-collagenous bone protein that binds tightly to hydroxyapatite. Appears to form an integral part of the mineralized matrix. Probably important to cell-matrix interaction.

## Research Area

Cardiovascular

## Image Data



Western blot analysis of Osteopontin expression in HepG2 cell lysate.