
Product Name: Orai1 (11C14) Rabbit Monoclonal Antibody**Catalog #: AMRe15491**

For research use only.

Summary

Description	Recombinant rabbit monoclonal antibody
Host	Rabbit
Application	WB
Reactivity	Human
Conjugation	Unconjugated
Modification	Unmodified
Isotype	IgG
Clonality	Monoclonal
Form	Liquid
Concentration	0.5mg/ml. The concentration of this product may be batch-dependent.
Storage	Aliquot and store at -20°C (valid for 12 months). Avoid freeze/thaw cycles.
Shipping	Ice bags
Buffer	Rabbit IgG in phosphate buffered saline , pH 7.4, 150mM NaCl, 0.02% New type preservative N and 50% glycerol. Store at +4°C short term. Store at -20°C long term. Avoid freeze / thaw cycle.
Purification	Affinity purification

Application

Dilution Ratio	WB 1:1000-1:5000
Molecular Weight	33kDa

Antigen Information

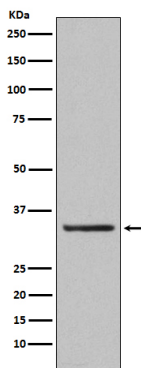
Gene Name	ORAI1
Alternative Names	CRACM1; Orai 1; ORAI calcium release activated calcium modulator 1; orai1; ORAT1; Protein orai 1; TMEM142A;
Gene ID	84876.0
SwissProt ID	Q96D31
Immunogen	A synthetic peptide of human Orai1

Background

Ca(2+) release-activated Ca(2+) (CRAC) channel subunit which mediates Ca(2+) influx following depletion of intracellular Ca(2+) stores and channel activation by the Ca(2+) sensor, STIM1. CRAC channels are the main pathway for Ca(2+) influx in T-cells and promote the immune response to pathogens by activating the transcription factor NFAT. Ca(2+) release-activated Ca(2+) (CRAC) channel subunit which mediates Ca(2+) influx following depletion of intracellular Ca(2+) stores and channel activation by the Ca(2+) sensor, STIM1 (PubMed:16582901, PubMed:16645049, PubMed:16733527, PubMed:16766533, PubMed:16807233, PubMed:19249086, PubMed:23307288, PubMed:24351972, PubMed:24591628, PubMed:28219928, PubMed:20354224, PubMed:26956484). CRAC channels are the main pathway for Ca(2+) influx in T-cells and promote the immune response to pathogens by activating the transcription factor NFAT (PubMed:16582901). Plays a prominent role in Ca(2+) influx at the basolateral membrane of mammary epithelial cells independently of the Ca(2+) content of endoplasmic reticulum or Golgi stores. May mediate transepithelial transport of large quantities of Ca(2+) for milk secretion.

Research Area

Image Data



Western blot analysis of Orai1 expression in human platelet lysate.