

---

**Product Name: NFAT1 (11H19) Rabbit Monoclonal Antibody****Catalog #: AMRe14636**

For research use only.

**Summary**

<b>Description</b>	Recombinant rabbit monoclonal antibody
<b>Host</b>	Rabbit
<b>Application</b>	WB
<b>Reactivity</b>	Human
<b>Conjugation</b>	Unconjugated
<b>Modification</b>	Unmodified
<b>Isotype</b>	IgG
<b>Clonality</b>	Monoclonal
<b>Form</b>	Liquid
<b>Concentration</b>	0.5mg/ml. The concentration of this product may be batch-dependent.
<b>Storage</b>	Aliquot and store at -20°C (valid for 12 months). Avoid freeze/thaw cycles.
<b>Shipping</b>	Ice bags
<b>Buffer</b>	Rabbit IgG in phosphate buffered saline , pH 7.4, 150mM NaCl, 0.02% New type preservative N and 50% glycerol. Store at +4°C short term. Store at -20°C long term. Avoid freeze / thaw cycle.
<b>Purification</b>	Affinity purification

**Application**

<b>Dilution Ratio</b>	WB 1:500-1:2000
<b>Molecular Weight</b>	100kDa

**Antigen Information**

<b>Gene Name</b>	NFATC2
<b>Alternative Names</b>	cytoplasmic 2; NF ATp; NF-ATc2; NF-ATp; NFAT 1; NFAT1; NFAT1-D; NFATc2; NFATp;
<b>Gene ID</b>	4773.0
<b>SwissProt ID</b>	Q13469
<b>Immunogen</b>	A synthetic peptide of human NFAT1

**Background**

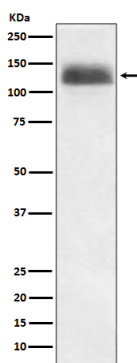
Plays a role in the inducible expression of cytokine genes in T-cells, especially in the induction of the IL-2, IL-3, IL-4, TNF-alpha

or GM-CSF. Plays a role in the inducible expression of cytokine genes in T-cells, especially in the induction of the IL-2, IL-3, IL-4, TNF-alpha or GM-CSF. Promotes invasive migration through the activation of GPC6 expression and WNT5A signaling pathway.

## Research Area

MAPK\_ERK\_Growth;MAPK\_G\_Protein;WNT;WNT-T CELLAxon guidance;VEGF;Natural killer cell mediated cytotoxicity;T\_Cell\_Receptor;B\_Cell\_Antigen;

## Image Data



Western blot analysis of NFAT1 expression in Ramos cell lysate.