

---

**Product Name: NEFM (5A2) Rabbit Monoclonal Antibody****Catalog #: AMRe14543**

For research use only.

**Summary**

<b>Description</b>	Recombinant rabbit monoclonal antibody
<b>Host</b>	Rabbit
<b>Application</b>	WB,IHC,ICC/IF,IP
<b>Reactivity</b>	Human
<b>Conjugation</b>	Unconjugated
<b>Modification</b>	Unmodified
<b>Isotype</b>	IgG
<b>Clonality</b>	Monoclonal
<b>Form</b>	Liquid
<b>Concentration</b>	0.5mg/ml. The concentration of this product may be batch-dependent.
<b>Storage</b>	Aliquot and store at -20°C (valid for 12 months). Avoid freeze/thaw cycles.
<b>Shipping</b>	Ice bags
<b>Buffer</b>	Rabbit IgG in phosphate buffered saline , pH 7.4, 150mM NaCl, 0.02% New type preservative N and 50% glycerol. Store at +4°C short term. Store at -20°C long term. Avoid freeze / thaw cycle.
<b>Purification</b>	Affinity purification

**Application**

<b>Dilution Ratio</b>	WB 1:1000-1:2000,IHC 1:100-1:200,ICC/IF 1:50-1:200,IP 1:20-1:50
<b>Molecular Weight</b>	102kDa

**Antigen Information**

<b>Gene Name</b>	NEFM
<b>Alternative Names</b>	150kDa medium; NEF3; NEFM; Neurofilament 3; NF160; NFM;
<b>Gene ID</b>	4741.0
<b>SwissProt ID</b>	P07197
<b>Immunogen</b>	A synthetic peptide corresponding to target protein

**Background**

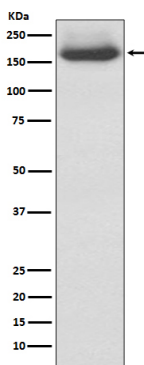
Integrins are heterodimers composed of noncovalently associated transmembrane  $\alpha$  and  $\beta$  subunits. The 16  $\alpha$  and 8  $\beta$  subunits

heterodimerize to produce more than 20 different receptors. Antibodies to this protein are useful to identify neurons and their processes in tissue sections and in tissue culture. Neurofilaments usually contain three intermediate filament proteins: NEFL, NEFM, and NEFH which are involved in the maintenance of neuronal caliber. May additionally cooperate with the neuronal intermediate filament proteins PRPH and INA to form neuronal filamentous networks (By similarity).

## Research Area

Neuroscience

## Image Data



Western blot analysis of NEFM expression in 293T cell lysate.