

**Product Name: MUM1 (9F19) Rabbit Monoclonal Antibody****Catalog #: AMRe14242**

For research use only.

**Summary**

<b>Description</b>	Recombinant rabbit monoclonal antibody
<b>Host</b>	Rabbit
<b>Application</b>	WB,IHC,ICC/IF,FC,IP
<b>Reactivity</b>	Human
<b>Conjugation</b>	Unconjugated
<b>Modification</b>	Unmodified
<b>Isotype</b>	IgG
<b>Clonality</b>	Monoclonal
<b>Form</b>	Liquid
<b>Concentration</b>	0.5mg/ml. The concentration of this product may be batch-dependent.
<b>Storage</b>	Aliquot and store at -20°C (valid for 12 months). Avoid freeze/thaw cycles.
<b>Shipping</b>	Ice bags
<b>Buffer</b>	Rabbit IgG in phosphate buffered saline , pH 7.4, 150mM NaCl, 0.02% New type preservative N and 50% glycerol. Store at +4°C short term. Store at -20°C long term. Avoid freeze / thaw cycle.
<b>Purification</b>	Affinity purification

**Application**

<b>Dilution Ratio</b>	WB 1:2000-1:20000,IHC 1:200-1:500,ICC/IF 1:200-1:500,FC 1:100-1:1000,IP 1:100-1:500
<b>Molecular Weight</b>	52kDa

**Antigen Information**

<b>Gene Name</b>	IRF4
<b>Alternative Names</b>	LSIRF; Multiple myeloma oncogene 1; NF-EM5; IRF4; MUM1; Transcriptional activator PIP;
<b>Gene ID</b>	3662.0
<b>SwissProt ID</b>	Q15306
<b>Immunogen</b>	A synthetic peptide of human MUM1

**Background**

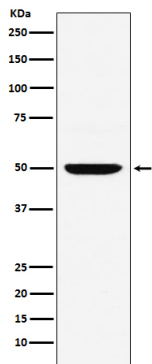
Melanoma associated antigen (mutated) 1 (MUM1, EXPAND1) is a PWWP-domain containing chromatin binding protein

involved in maintaining chromatin architecture of interphase chromosomes. Transcriptional activator. Binds to the interferon-stimulated response element (ISRE) of the MHC class I promoter. Binds the immunoglobulin lambda light chain enhancer, together with PU.1. Probably plays a role in ISRE-targeted signal transduction mechanisms specific to lymphoid cells. Involved in CD8(+) dendritic cell differentiation by forming a complex with the BATF-JUNB heterodimer in immune cells, leading to recognition of AICE sequence (5'-TGAnTCA/GAAA- 3'), an immune-specific regulatory element, followed by cooperative binding of BATF and IRF4 and activation of genes (By similarity).

## Research Area

Tags & Cell Markers

## Image Data



Western blot analysis of MUM1 expression in Daudi cell lysate.