

Product Name: MUC1 (8S2) Rabbit Monoclonal Antibody**Catalog #: AMRe14225**

For research use only.

Summary

Description	Recombinant rabbit monoclonal antibody
Host	Rabbit
Application	WB,IHC,ICC/IF,FC,IP
Reactivity	Human,Mouse,Rat
Conjugation	Unconjugated
Modification	Unmodified
Isotype	IgG
Clonality	Monoclonal
Form	Liquid
Concentration	0.5mg/ml. The concentration of this product may be batch-dependent.
Storage	Aliquot and store at -20°C (valid for 12 months). Avoid freeze/thaw cycles.
Shipping	Ice bags
Buffer	Supplied in 50mM Tris-Glycine(pH 7.4), 0.15M NaCl, 40%Glycerol, 0.01% New type preservative N and 0.05% protective protein.
Purification	Affinity purification

Application

Dilution Ratio	WB 1:500-1:2000,IHC 1:20-1:500,ICC/IF 1:100-1:200,FC 1:20-1:50,IP 1:20-1:50
Molecular Weight	122kDa

Antigen Information

Gene Name	MUC1 MUC1; CA15-3; CD227; DF3 antigen; Episialin; Epithelial membrane antigen; H23 antigen;
Alternative Names	H23AG; Krebs von den Lungen-6; MAM6; MUC1/ZD; MUC-1/SEC; Mucin-1; Pem; KL-6; MUC-1/X; Tumor-associated mucin;
Gene ID	4582.0
SwissProt ID	P15941
Immunogen	A synthetic peptide of human MUC1

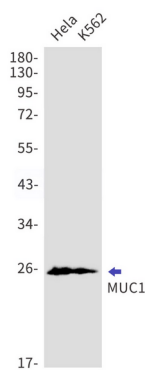
Background

This gene is a member of the mucin family and encodes a membrane bound, glycosylated phosphoprotein. This protein is anchored to the apical surface of many epithelia by a transmembrane domain, with the degree of glycosylation varying with cell type. The protein serves a protective function, binding to pathogens, as well as functioning in a cell signaling capacity. The alpha subunit has cell adhesive properties. Can act both as an adhesion and an anti-adhesion protein. May provide a protective layer on epithelial cells against bacterial and enzyme attack.

Research Area

Tags & Cell Markers

Image Data



Western blot detection of MUC1 in HeLa, K562 cell lysates using MUC1 antibody (1:1000 diluted).