

Product Name: MT-ND1 (12B19) Rabbit Monoclonal Antibody**Catalog #: AMRe14216**

For research use only.

Summary

Description	Recombinant rabbit monoclonal antibody
Host	Rabbit
Application	WB
Reactivity	Human,Mouse,Rat
Conjugation	Unconjugated
Modification	Unmodified
Isotype	IgG
Clonality	Monoclonal
Form	Liquid
Concentration	0.5mg/ml. The concentration of this product may be batch-dependent.
Storage	Aliquot and store at -20°C (valid for 12 months). Avoid freeze/thaw cycles.
Shipping	Ice bags
Buffer	Supplied in 50mM Tris-Glycine(pH 7.4), 0.15M NaCl, 40%Glycerol, 0.01% New type preservative N and 0.05% protective protein.
Purification	Affinity purification

Application

Dilution Ratio	WB 1:1000-1:5000
Molecular Weight	36kDa

Antigen Information

Gene Name	MT-ND1
Alternative Names	MT-ND1; MTND1; NAD1; NADH1; ND1;
Gene ID	4535.0
SwissProt ID	P03886
Immunogen	A synthetic peptide of human MT-ND1

Background

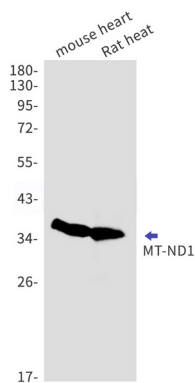
Core subunit of the mitochondrial membrane respiratory chain NADH dehydrogenase (Complex I) that is believed to belong to the minimal assembly required for catalysis. Complex I functions in the transfer of electrons from NADH to the respiratory

chain. The immediate electron acceptor for the enzyme is believed to be ubiquinone. Core subunit of the mitochondrial membrane respiratory chain NADH dehydrogenase (Complex I) which catalyzes electron transfer from NADH through the respiratory chain, using ubiquinone as an electron acceptor (PubMed:1959619). Essential for the catalytic activity and assembly of complex I (PubMed:26929434, PubMed:1959619).

Research Area

Signal Transduction

Image Data



Western blot detection of MT-ND1 in mouse heart, Rat heart cell lysates using MT-ND1 antibody (1:1000 diluted).