

---

**Product Name: MRC2/ENDO180 (10A4) Rabbit Monoclonal Antibody****Catalog #: AMRe14079**

For research use only.

**Summary**

<b>Description</b>	Recombinant rabbit monoclonal antibody
<b>Host</b>	Rabbit
<b>Application</b>	WB
<b>Reactivity</b>	Human
<b>Conjugation</b>	Unconjugated
<b>Modification</b>	Unmodified
<b>Isotype</b>	IgG
<b>Clonality</b>	Monoclonal
<b>Form</b>	Liquid
<b>Concentration</b>	0.5mg/ml. The concentration of this product may be batch-dependent.
<b>Storage</b>	Aliquot and store at -20°C (valid for 12 months). Avoid freeze/thaw cycles.
<b>Shipping</b>	Ice bags
<b>Buffer</b>	Rabbit IgG in phosphate buffered saline , pH 7.4, 150mM NaCl, 0.02% New type preservative N and 50% glycerol. Store at +4°C short term. Store at -20°C long term. Avoid freeze / thaw cycle.
<b>Purification</b>	Affinity purification

**Application**

<b>Dilution Ratio</b>	WB 1:1000-1:5000
<b>Molecular Weight</b>	167kDa

**Antigen Information**

<b>Gene Name</b>	MRC2
<b>Alternative Names</b>	CD280 antigen; MRC2; ENDO180; KIAA0709; UPARAP;
<b>Gene ID</b>	9902.0
<b>SwissProt ID</b>	Q9UBG0
<b>Immunogen</b>	A synthetic peptide of human MRC2

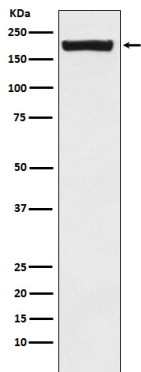
**Background**

May play a role as endocytotic lectin receptor displaying calcium-dependent lectin activity. Internalizes glycosylated ligands

from the extracellular space for release in an endosomal compartment via clathrin-mediated endocytosis. May play a role as endocytotic lectin receptor displaying calcium-dependent lectin activity. Internalizes glycosylated ligands from the extracellular space for release in an endosomal compartment via clathrin-mediated endocytosis. May be involved in plasminogen activation system controlling the extracellular level of PLAUR/PLAU, and thus may regulate protease activity at the cell surface. May contribute to cellular uptake, remodeling and degradation of extracellular collagen matrices. May play a role during cancer progression as well as in other chronic tissue destructive diseases acting on collagen turnover. May participate in remodeling of extracellular matrix cooperating with the matrix metalloproteinases (MMPs).

## Research Area

## Image Data



Western blot analysis of MRC2/ENDO180 expression in Saos2 cell lysate.