

Product Name: MLANA (10J15) Rabbit Monoclonal Antibody
Catalog #: AMRe13940

Summary

Production Name	MLANA (10J15) Rabbit Monoclonal Antibody
Description	Rabbit Monoclonal Antibody
Host	Rabbit
Application	WB,IHC-P,ICC/IF,FC,IF-P
Reactivity	Human,Mouse

Performance

Conjugation	Unconjugated
Modification	Unmodified
Isotype	IgG
Clonality	Monoclonal
Form	Liquid
Storage	Store at 4°C short term. Aliquot and store at -20°C long term. Avoid freeze/thaw cycles. Rabbit IgG in phosphate buffered saline , pH 7.4, 150mM NaCl, 0.02% New type
Buffer	preservative N and 50% glycerol. Store at +4°C short term. Store at -20°C long term. Avoid freeze / thaw cycle.
Purification	Affinity purification

Immunogen

Gene Name	MLANA
Alternative Names	Antigen LB39-AA; Antigen SK29-AA; MAR1; MART-1; MART1; melan-A; Melanoma antigen recognized by T-cells 1; MLANA; Protein Melan-A;
Gene ID	2315.0
SwissProt ID	Q16655.

Application

Dilution Ratio	WB 1:1000, IHC-P/IF-P 1:200-1:1000, ICC/IF 1:500-1:1000, FCM 1:200-1:500
Molecular Weight	13kDa

Product Name: MLANA (10J15) Rabbit Monoclonal Antibody
Catalog #: AMRe13940

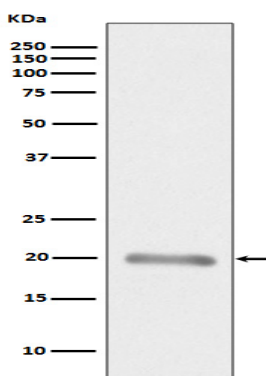


Background

Involved in melanosome biogenesis by ensuring the stability of GPR143. Plays a vital role in the expression, stability, trafficking, and processing of melanocyte protein PMEL, which is critical to the formation of stage II melanosomes. Involved in melanosome biogenesis by ensuring the stability of GPR143. Plays a vital role in the expression, stability, trafficking, and processing of melanocyte protein PMEL, which is critical to the formation of stage II melanosomes.

Research Area

Image Data



Western blot analysis of MLANA expression in Human melanoma tissue lysate.

Note

For research use only.