

**Product Name: MDH1 (4Q13) Rabbit Monoclonal Antibody****Catalog #: AMRe13752**

For research use only.

**Summary**

<b>Description</b>	Recombinant rabbit monoclonal antibody
<b>Host</b>	Rabbit
<b>Application</b>	WB, ICC/IF, FC, IP
<b>Reactivity</b>	Human, Mouse, Rat
<b>Conjugation</b>	Unconjugated
<b>Modification</b>	Unmodified
<b>Isotype</b>	IgG
<b>Clonality</b>	Monoclonal
<b>Form</b>	Liquid
<b>Concentration</b>	0.5mg/ml. The concentration of this product may be batch-dependent.
<b>Storage</b>	Aliquot and store at -20°C (valid for 12 months). Avoid freeze/thaw cycles.
<b>Shipping</b>	Ice bags
<b>Buffer</b>	Rabbit IgG in phosphate buffered saline , pH 7.4, 150mM NaCl, 0.02% New type preservative N and 50% glycerol. Store at +4°C short term. Store at -20°C long term. Avoid freeze / thaw cycle.
<b>Purification</b>	Affinity purification

**Application**

<b>Dilution Ratio</b>	WB 1:2000-1:20000, ICC/IF 1:100-1:200, FC 1:20-1:50, IP 1:50-1:100
<b>Molecular Weight</b>	36kDa

**Antigen Information**

<b>Gene Name</b>	MDH1
<b>Alternative Names</b>	MDH s; mdh1; MDHA; MDHs; MOR2;
<b>Gene ID</b>	4190.0
<b>SwissProt ID</b>	P40925
<b>Immunogen</b>	A synthetic peptide of human MDH1

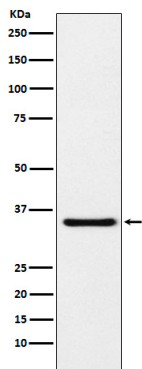
**Background**

Belongs to the LDH/MDH superfamily. MDH type 2 family. Catalyzes the reduction of aromatic alpha-keto acids in the presence

of NADH (PubMed:3052244). Plays essential roles in the malate- aspartate shuttle and the tricarboxylic acid cycle, important in mitochondrial NADH supply for oxidative phosphorylation (PubMed:31538237).

## Research Area

## Image Data



Western blot analysis of MDH1 expression in HeLa cell lysate.