
Product Name: MCSF (11G12) Rabbit Monoclonal Antibody**Catalog #: AMRe13736**

For research use only.

Summary

Description	Recombinant rabbit monoclonal antibody
Host	Rabbit
Application	WB,IHC,ICC/IF,FC
Reactivity	Human,Mouse,Rat
Conjugation	Unconjugated
Modification	Unmodified
Isotype	IgG
Clonality	Monoclonal
Form	Liquid
Concentration	0.5mg/ml. The concentration of this product may be batch-dependent.
Storage	Aliquot and store at -20°C (valid for 12 months). Avoid freeze/thaw cycles.
Shipping	Ice bags
Buffer	Supplied in 50mM Tris-Glycine(pH 7.4), 0.15M NaCl, 40%Glycerol, 0.01% New type preservative N and 0.05% protective protein.
Purification	Affinity purification

Application

Dilution Ratio	WB 1:500-1:2000,IHC 1:200-1:500,ICC/IF 1:100-1:200,FC 1:200-1:500
Molecular Weight	60kDa

Antigen Information

Gene Name	CSF1
Alternative Names	CSF1; Csfm; MCSF; MGC31930; Macrophage colony stimulating factor;
Gene ID	1435.0
SwissProt ID	P09603
Immunogen	A synthetic peptide of human M-CSF

Background

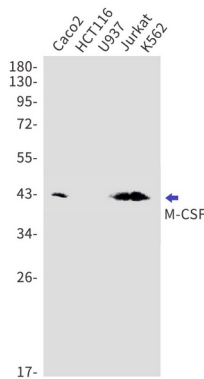
CSF1, also known as MCSF, is a four- α -helical bundle cytokine that controls the production, differentiation, and function of macrophages. The active form of the protein is found extracellularly as a disulfide-linked homodimer, and is thought to be

produced by proteolytic cleavage of membrane-bound precursors. This protein may be involved in development of the placenta. Cytokine that plays an essential role in the regulation of survival, proliferation and differentiation of hematopoietic precursor cells, especially mononuclear phagocytes, such as macrophages and monocytes. Promotes the release of proinflammatory chemokines, and thereby plays an important role in innate immunity and in inflammatory processes. Plays an important role in the regulation of osteoclast proliferation and differentiation, the regulation of bone resorption, and is required for normal bone development. Required for normal male and female fertility. Promotes reorganization of the actin cytoskeleton, regulates formation of membrane ruffles, cell adhesion and cell migration. Plays a role in lipoprotein clearance.

Research Area

Immunology

Image Data



Western blot detection of M-CSF in Caco2 , HCT116 , U937 , Jurkat,K562 cell lysates using M-CSF antibody(1:1000 diluted).