

Product Name: Maltose Binding Protein (17Y13) Rabbit Monoclonal Antibody**Catalog #: AMRe13609**

For research use only.

Summary

Description	Recombinant rabbit monoclonal antibody
Host	Rabbit
Application	WB
Reactivity	Escherichia coli
Conjugation	Unconjugated
Modification	Unmodified
Isotype	IgG
Clonality	Monoclonal
Form	Liquid
Concentration	0.5mg/ml. The concentration of this product may be batch-dependent.
Storage	Aliquot and store at -20°C (valid for 12 months). Avoid freeze/thaw cycles.
Shipping	Ice bags
Buffer	Rabbit IgG in phosphate buffered saline , pH 7.4, 150mM NaCl, 0.02% New type preservative N and 50% glycerol. Store at +4°C short term. Store at -20°C long term. Avoid freeze / thaw cycle.
Purification	Affinity purification

Application

Dilution Ratio	WB 1:1000-1:5000
Molecular Weight	43kDa

Antigen Information

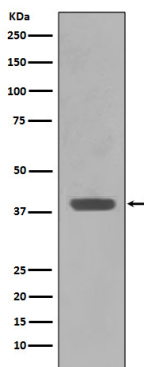
Gene Name	malE
Alternative Names	ECK4026;MalE;malJ;Maltodextrin binding protein;MMBP;Periplasmic maltose binding protein;
Gene ID	61753691;948538
SwissProt ID	P0AEX9
Immunogen	A synthetic peptide of Maltose Binding Protein

Background

Involved in the high-affinity maltose membrane transport system MalEFGK. Initial receptor for the active transport of and chemotaxis toward maltooligosaccharides. Part of the ABC transporter complex MalEFGK involved in maltose/maltodextrin import. Binds maltose and higher maltodextrins such as maltotriose.

Research Area

Image Data



Western blot analysis of Maltose Binding Protein expression in E.coli lysate.