

Product Name: MAGE 1 (12F10) Rabbit Monoclonal Antibody**Catalog #: AMRe13588**

For research use only.

Summary

Description	Recombinant rabbit monoclonal antibody
Host	Rabbit
Application	WB, ICC/IF, FC
Reactivity	Human, Mouse, Rat
Conjugation	Unconjugated
Modification	Unmodified
Isotype	IgG
Clonality	Monoclonal
Form	Liquid
Concentration	0.5mg/ml. The concentration of this product may be batch-dependent.
Storage	Aliquot and store at -20°C (valid for 12 months). Avoid freeze/thaw cycles.
Shipping	Ice bags
Buffer	Rabbit IgG in phosphate buffered saline , pH 7.4, 150mM NaCl, 0.02% New type preservative N and 50% glycerol. Store at +4°C short term. Store at -20°C long term. Avoid freeze / thaw cycle.
Purification	Affinity purification

Application

Dilution Ratio	WB 1:500-1:2000, ICC/IF 1:20-1:50, FC 1:20-1:50
Molecular Weight	34kDa

Antigen Information

Gene Name	MAGEA1
Alternative Names	CT1.1; MAGE1; MAGE1A; MAGEA1;
Gene ID	4100.0
SwissProt ID	P43355
Immunogen	A synthetic peptide of human MAGE 1

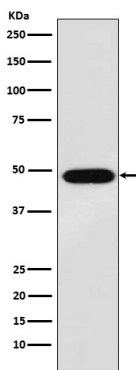
Background

May be involved in transcriptional regulation through interaction with SNW1 and recruiting histone deacetylase HDAC1. May

inhibit notch intracellular domain (NICD) transactivation. May play a role in embryonal development and tumor transformation or aspects of tumor progression. May be involved in transcriptional regulation through interaction with SNW1 and recruiting histone deactelyase HDAC1. May inhibit notch intracellular domain (NICD) transactivation. May play a role in embryonal development and tumor transformation or aspects of tumor progression. Antigen recognized on a melanoma by autologous cytolytic T-lymphocytes.

Research Area

Image Data



Western blot analysis of MAGE 1 expression in A375 cell lysate.