

---

**Product Name: Loricrin (11D11) Rabbit Monoclonal Antibody****Catalog #: AMRe13372**

For research use only.

**Summary**

<b>Description</b>	Recombinant rabbit monoclonal antibody
<b>Host</b>	Rabbit
<b>Application</b>	IHC, ICC/IF
<b>Reactivity</b>	Human, Rat
<b>Conjugation</b>	Unconjugated
<b>Modification</b>	Unmodified
<b>Isotype</b>	IgG
<b>Clonality</b>	Monoclonal
<b>Form</b>	Liquid
<b>Concentration</b>	0.42mg/ml. The concentration of this product may be batch-dependent.
<b>Storage</b>	Aliquot and store at -20°C (valid for 12 months). Avoid freeze/thaw cycles.
<b>Shipping</b>	Ice bags
<b>Buffer</b>	Rabbit IgG in phosphate buffered saline , pH 7.4, 150mM NaCl, 0.02% New type preservative N and 50% glycerol. Store at +4°C short term. Store at -20°C long term. Avoid freeze / thaw cycle.
<b>Purification</b>	Affinity purification

**Application**

<b>Dilution Ratio</b>	IHC 1:100-1:200, ICC/IF 1:100-1:200
<b>Molecular Weight</b>	26kDa

**Antigen Information**

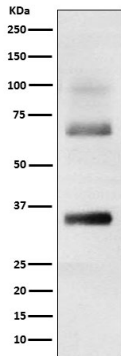
<b>Gene Name</b>	LORICRIN
<b>Alternative Names</b>	LOR; Loricrin; LRN;
<b>Gene ID</b>	4014.0
<b>SwissProt ID</b>	P23490
<b>Immunogen</b>	A synthetic peptide of human Loricrin

**Background**

Major keratinocyte cell envelope protein. Major keratinocyte cell envelope protein.

## Research Area

## Image Data



Western blot analysis of Loricrin expression in Human skin cell lysate.