
Product Name: LDL Receptor (14L10) Rabbit Monoclonal Antibody**Catalog #: AMRe13267**

For research use only.

Summary

Description	Recombinant rabbit monoclonal antibody
Host	Rabbit
Application	WB,IHC,ICC/IF,FC
Reactivity	Human,Mouse
Conjugation	Unconjugated
Modification	Unmodified
Isotype	IgG
Clonality	Monoclonal
Form	Liquid
Concentration	0.28mg/ml. The concentration of this product may be batch-dependent.
Storage	Aliquot and store at -20°C (valid for 12 months). Avoid freeze/thaw cycles.
Shipping	Ice bags
Buffer	Rabbit IgG in phosphate buffered saline , pH 7.4, 150mM NaCl, 0.02% New type preservative N and 50% glycerol. Store at +4°C short term. Store at -20°C long term. Avoid freeze / thaw cycle.
Purification	Affinity purification

Application

Dilution Ratio	WB 1:500-1:2000,IHC 1:50-1:200,ICC/IF 1:20-1:100,FC 1:20-1:50
Molecular Weight	95kDa

Antigen Information

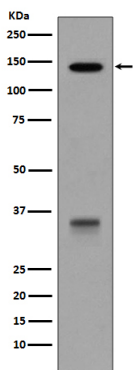
Gene Name	LDLR
Alternative Names	FH ; FHC ; LDL receptor; LDLCQ2; LDLR ; Low Density Lipoprotein Receptor; Low density lipoprotein receptor class A domain containing protein 3;
Gene ID	3949.0
SwissProt ID	P01130
Immunogen	A synthetic peptide of human LDL Receptor

Background

Binds LDL, the major cholesterol-carrying lipoprotein of plasma, and transports it into cells by endocytosis. In order to be internalized, the receptor-ligand complexes must first cluster into clathrin-coated pits. In case of HIV-1 infection, functions as a receptor for extracellular Tat in neurons, mediating its internalization in uninfected cells. Binds LDL, the major cholesterol-carrying lipoprotein of plasma, and transports it into cells by endocytosis. In order to be internalized, the receptor-ligand complexes must first cluster into clathrin-coated pits.

Research Area

Image Data



Western blot analysis of LDLR expression in HepG2 cell lysate.