
Product Name: LAMP2 (4P12) Rabbit Monoclonal Antibody**Catalog #: AMRe13209**

For research use only.

Summary

Description	Recombinant rabbit monoclonal antibody
Host	Rabbit
Application	WB,IHC,IF-P
Reactivity	Human
Conjugation	Unconjugated
Modification	Unmodified
Isotype	IgG
Clonality	Monoclonal
Form	Liquid
Concentration	0.5mg/ml. The concentration of this product may be batch-dependent.
Storage	Aliquot and store at -20°C (valid for 12 months). Avoid freeze/thaw cycles.
Shipping	Ice bags
Buffer	Rabbit IgG in phosphate buffered saline , pH 7.4, 150mM NaCl, 0.02% New type preservative N and 50% glycerol. Store at +4°C short term. Store at -20°C long term. Avoid freeze / thaw cycle.
Purification	Affinity purification

Application

Dilution Ratio	WB 1:500-1:2000,IHC 1:100-1:200,IF-P 1:100-1:200
Molecular Weight	45kDa

Antigen Information

Gene Name	LAMP2
Alternative Names	LAMPB; CD107b; LAMP-2; LGP110;
Gene ID	3920.0
SwissProt ID	P13473
Immunogen	A synthetic peptide of human LAMP2

Background

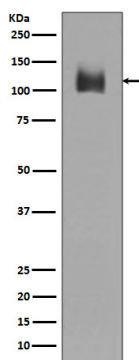
Lysosomal-associated membrane protein 2 (LAMP2, synonyms: LAMPB, CD107b) is a member of a family of membrane

glycoproteins. This glycoprotein provides selectins with carbohydrate ligands. LAMP2 may play a role in tumor cell metastasis. It may also function in the protection, maintenance, and adhesion of the lysosome. Prior to posttranslational modification, Lysosome Associated Membrane Protein 2 (LAMP2) is a ~45 kDa polypeptide. Plays an important role in chaperone-mediated autophagy, a process that mediates lysosomal degradation of proteins in response to various stresses and as part of the normal turnover of proteins with a long biological half-life (PubMed:8662539, PubMed:11082038, PubMed:18644871, PubMed:24880125, PubMed:27628032). Functions by binding target proteins, such as GAPDH and MLLT11, and targeting them for lysosomal degradation (PubMed:8662539, PubMed:11082038, PubMed:18644871, PubMed:24880125). Plays a role in lysosomal protein degradation in response to starvation (By similarity). Required for the fusion of autophagosomes with lysosomes during autophagy (PubMed:27628032). Cells that lack LAMP2 express normal levels of VAMP8, but fail to accumulate STX17 on autophagosomes, which is the most likely explanation for the lack of fusion between autophagosomes and lysosomes (PubMed:27628032). Required for normal degradation of the contents of autophagosomes (PubMed:27628032). Required for efficient MHCII-mediated presentation of exogenous antigens via its function in lysosomal protein degradation; antigenic peptides generated by proteases in the endosomal/lysosomal compartment are captured by nascent MHCII subunits (PubMed:20518820). Is not required for efficient MHCII-mediated presentation of endogenous antigens (PubMed:20518820).

Research Area

Tags & Cell Markers

Image Data



Western blot analysis of LAMP2 expression in JAR cell lysate.